



Ministry of Agriculture and Forests  
Royal Government of Bhutan



**RNR**  
**Extension Manual**  
**2021**



## PERSONAL INFORMATION

Name:.....

Designation:.....

Office:.....

Centre:.....

Gewog/Dungkhag:.....

Dzongkhag:.....

Telephone:..... Fax:.....

Mobile:..... Email:.....

*Address to return this Manual, in case, it is found:*

.....

.....

*The information compiled here is an efforts of all the concerned departments and agencies of the Ministry of Agriculture and Forests. The user is encouraged to update and complete any information supplied herein, using own observations, information supplied through circulation, etc. You are also encouraged to make suggestions about information to be added in future issues of Manual at the following address:-*

**Information and Communication Technology Division (ICTD)  
Directorate Services  
Ministry of Agriculture and Forests**

Post Box No. 1095, Thimphu  
Tel. No: 00975-02-323765/321142/321311  
Fax No: 00975-02-324520  
E-mail: [ictd@moaf.gov.bt](mailto:ictd@moaf.gov.bt)  
Website: [www.moaf.gov.bt](http://www.moaf.gov.bt)

# 2021 Year Planner



	January	February	March	April	May	June
Monday		1	1			
Tuesday		2	2			1
Wednesday		3	3			2
Thursday		4	4	1		3
Friday	1	5	5	2		4
Saturday	2	6	6	3	1	5
Sunday	3	7	7	4	2	6
Monday	4	8	8	5	3	7
Tuesday	5	9	9	6	4	8
Wednesday	6	10	10	7	5	9
Thursday	7	11	11	8	6	10
Friday	8	12	12	9	7	11
Saturday	9	13	13	10	8	12
Sunday	10	14	14	11	9	13
Monday	11	15	15	12	10	14
Tuesday	12	16	16	13	11	15
Wednesday	13	17	17	14	12	16
Thursday	14	18	18	15	13	17
Friday	15	19	19	16	14	18
Saturday	16	20	20	17	15	19
Sunday	17	21	21	18	16	20
Monday	18	22	22	19	17	21
Tuesday	19	23	23	20	18	22
Wednesday	20	24	24	21	19	23
Thursday	21	25	25	22	20	24
Friday	22	26	26	23	21	25
Saturday	23	27	27	24	22	26
Sunday	24	28	28	25	23	27
Monday	25		29	26	24	28
Tuesday	26		30	27	25	29
Wednesday	27		31	28	26	30
Thursday	28			29	27	
Friday	29			30	28	
Saturday	30				29	
Sunday	31				30	
Monday					31	
Tuesday						



# 2021 Year Planner

July	August	September	October	November	December	
				1		Monday
				2		Tuesday
		1		3	1	Wednesday
1		2		4	2	Thursday
2		3	1	5	3	Friday
3		4	2	6	4	Saturday
4	1	5	3	7	5	Sunday
5	2	6	4	8	6	Monday
6	3	7	5	9	7	Tuesday
7	4	8	6	10	8	Wednesday
8	5	9	7	11	9	Thursday
9	6	10	8	12	10	Friday
10	7	11	9	13	11	Saturday
11	8	12	10	14	12	Sunday
12	9	13	11	15	13	Monday
13	10	14	12	16	14	Tuesday
14	11	15	13	17	15	Wednesday
15	12	16	14	18	16	Thursday
16	13	17	15	19	17	Friday
17	14	18	16	20	18	Saturday
18	15	19	17	21	19	Sunday
19	16	20	18	22	20	Monday
20	17	21	19	23	21	Tuesday
21	18	22	20	24	22	Wednesday
22	19	23	21	25	23	Thursday
23	20	24	22	26	24	Friday
24	21	25	23	27	25	Saturday
25	22	26	24	28	26	Sunday
26	23	27	25	29	27	Monday
27	24	28	26	30	28	Tuesday
28	25	29	27		29	Wednesday
29	26	30	28		30	Thursday
30	27		29		31	Friday
31	28		30			Saturday
	29		31			Sunday
	30					Monday
	31					Tuesday

# Calendar 2021

## Female Iron Ox Year



### January

འབྲུག་རྒྱ་བཙུ་གཏིས་པ་དང་བཙུ་གཏིས་པ།

ཐུགས་རྒྱུད། SUNDAY	མིག་དཀར། MONDAY	ཉུག་པ། TUESDAY	ལྷ་མཚན། WEDNESDAY	པ་ལངས། THURSDAY	མིག་པ། FRIDAY	ཉིན། SATURDAY
31					1	2
3	4	5	6	7	8	9
10	11	12	13	14	15	16
17	18	19	20	21	22	23
24	25	26	27	28	29	30

2: Nyilo | 14: Traditional Day of Offering

### February

འབྲུག་རྒྱ་བཙུ་གཏིས་པ་དང་དང་པ།

ཐུགས་རྒྱུད། SUNDAY	མིག་དཀར། MONDAY	ཉུག་པ། TUESDAY	ལྷ་མཚན། WEDNESDAY	པ་ལངས། THURSDAY	མིག་པ། FRIDAY	ཉིན། SATURDAY
	1	2	3	4	5	6
7	8	9	10	11	12	13
14	15	16	17	18	19	20
21	22	23	24	25	26	27
28						

12-13: Female Iron Ox Year

21-23: Birth Anniversary of His Majesty The King

### March

འབྲུག་རྒྱ་དང་པ་དང་གཏིས་པ།

ཐུགས་རྒྱུད། SUNDAY	མིག་དཀར། MONDAY	ཉུག་པ། TUESDAY	ལྷ་མཚན། WEDNESDAY	པ་ལངས། THURSDAY	མིག་པ། FRIDAY	ཉིན། SATURDAY
	1	2	3	4	5	6
7	8	9	10	11	12	13
14	15	16	17	18	19	20
21	22	23	24	25	26	27
28	29	30	31			

### April

འབྲུག་རྒྱ་བཙུ་གཏིས་པ་དང་གསུམ་པ་ལྷི་མ།

ཐུགས་རྒྱུད། SUNDAY	མིག་དཀར། MONDAY	ཉུག་པ། TUESDAY	ལྷ་མཚན། WEDNESDAY	པ་ལངས། THURSDAY	མིག་པ། FRIDAY	ཉིན། SATURDAY
				1	2	3
4	5	6	7	8	9	10
11	12	13	14	15	16	17
18	19	20	21	22	23	24
25	26	27	28	29	30	

22: Zhabdrung Kuchoe

### May

འབྲུག་རྒྱ་གསུམ་པ་ལྷི་མ་དང་གསུམ་པ་ལྷི་མ།

ཐུགས་རྒྱུད། SUNDAY	མིག་དཀར། MONDAY	ཉུག་པ། TUESDAY	ལྷ་མཚན། WEDNESDAY	པ་ལངས། THURSDAY	མིག་པ། FRIDAY	ཉིན། SATURDAY
30	31					1
2	3	4	5	6	7	8
9	10	11	12	13	14	15
16	17	18	19	20	21	22
23	24	25	26	27	28	29

2: Birth Anniversary of 3<sup>rd</sup> King | 26: Lord Buddha's Parinirvana

### June

འབྲུག་རྒྱ་གསུམ་པ་ལྷི་མ་དང་བཞི་པ།

ཐུགས་རྒྱུད། SUNDAY	མིག་དཀར། MONDAY	ཉུག་པ། TUESDAY	ལྷ་མཚན། WEDNESDAY	པ་ལངས། THURSDAY	མིག་པ། FRIDAY	ཉིན། SATURDAY
		1	2	3	4	5
6	7	8	9	10	11	12
13	14	15	16	17	18	19
20	21	22	23	24	25	26
27	28	29	30			

20: Birth Anniversary of Guru Rinpoche



# Calendar 2021

## Female Iron Ox Year

### July

འབྲུག་རྒྱ་བཞི་པ་དང་ལྷ་པ།

ཇུག་ཉིན།	ལྷན་ཉིན།	ལྷན་ཉིན།	ལྷན་ཉིན།	ལྷན་ཉིན།	ལྷན་ཉིན།	ལྷན་ཉིན།
SUNDAY	MONDAY	TUESDAY	WEDNESDAY	THURSDAY	FRIDAY	SATURDAY
				1	2	3
4	5	6	7	8	9	10
11	12	13	14	15	16	17
18	19	20	21	22	23	24
25	26	27	28	29	30	31

14: First Sermon of Lord Buddha

### August

འབྲུག་རྒྱ་ལྷ་པ་ རྒྱ་པ་དང་ བུ་མོ་པ།

ཇུག་ཉིན།	ལྷན་ཉིན།	ལྷན་ཉིན།	ལྷན་ཉིན།	ལྷན་ཉིན།	ལྷན་ཉིན།	ལྷན་ཉིན།
SUNDAY	MONDAY	TUESDAY	WEDNESDAY	THURSDAY	FRIDAY	SATURDAY
1	2	3	4	5	6	7
8	9	10	11	12	13	14
15	16	17	18	19	20	21
22	23	24	25	26	27	28
29	30	31				

### September

འབྲུག་རྒྱ་བུ་མོ་པ་དང་ བརྒྱུད་པ།

ཇུག་ཉིན།	ལྷན་ཉིན།	ལྷན་ཉིན།	ལྷན་ཉིན།	ལྷན་ཉིན།	ལྷན་ཉིན།	ལྷན་ཉིན།
SUNDAY	MONDAY	TUESDAY	WEDNESDAY	THURSDAY	FRIDAY	SATURDAY
			1	2	3	4
5	6	7	8	9	10	11
12	13	14	15	16	17	18
19	20	21	22	23	24	25
26	27	28	29	30		

11: Thimphu Drubchoe (Thimphu only)

15-17: Thimphu Tshechu (Thimphu only) | 23: Blessed Rainy Day

### October

འབྲུག་རྒྱ་བརྒྱུད་པ་དང་ རྒྱ་པ།

ཇུག་ཉིན།	ལྷན་ཉིན།	ལྷན་ཉིན།	ལྷན་ཉིན།	ལྷན་ཉིན།	ལྷན་ཉིན།	ལྷན་ཉིན།
SUNDAY	MONDAY	TUESDAY	WEDNESDAY	THURSDAY	FRIDAY	SATURDAY
31					1	2
3	4	5	6	7	8	9
10	11	12	13	14	15	16
17	18	19	20	21	22	23
24	25	26	27	28	29	30

15: Dassain | 27: Descending Day of Lord Buddha

### November

འབྲུག་རྒྱ་དབྱུག་པ་དང་ བུ་མོ་པ།

ཇུག་ཉིན།	ལྷན་ཉིན།	ལྷན་ཉིན།	ལྷན་ཉིན།	ལྷན་ཉིན།	ལྷན་ཉིན།	ལྷན་ཉིན།
SUNDAY	MONDAY	TUESDAY	WEDNESDAY	THURSDAY	FRIDAY	SATURDAY
	1	2	3	4	5	6
7	8	9	10	11	12	13
14	15	16	17	18	19	20
21	22	23	24	25	26	27
28	29	30				

1: Coronation Day of His Majesty The King

11: Birth Anniversary of 4<sup>th</sup> King/Constitution and GNH Day

### December

འབྲུག་རྒྱ་བུ་མོ་པ་དང་ བུ་མོ་པ།

ཇུག་ཉིན།	ལྷན་ཉིན།	ལྷན་ཉིན།	ལྷན་ཉིན།	ལྷན་ཉིན།	ལྷན་ཉིན།	ལྷན་ཉིན།
SUNDAY	MONDAY	TUESDAY	WEDNESDAY	THURSDAY	FRIDAY	SATURDAY
			1	2	3	4
5	6	7	8	9	10	11
12	13	14	15	16	17	18
19	20	21	22	23	24	25
26	27	28	29	30	31	

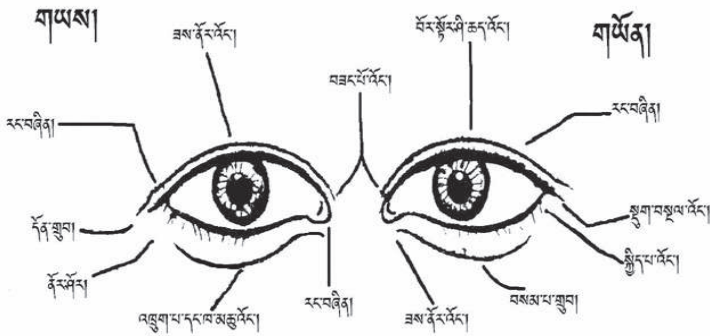
17: National Day

# Contents

Topic	Page
Eye sign and important <i>Zakars</i> for reference	1
12 <sup>th</sup> Five Year Plan	4
Royalty rate on Forestry Products for commercial purpose	5
Royalty rate for Timber with cull	7
Approved Non-Wood Forest Products (NWFPs) royalty rates	8
New Rural House Construction	11
Totally protected Plant species	12
Protected Areas and Biological Corridors of Bhutan	13
Seed collection and sowing	14
Percentage of Protected Areas (PAs) and Biological Corridors (BCs)	17
Prices of Seeds, Seedlings and Fertilisers	19
Field Crops varieties in Bhutan	22
De-notified varieties	31
Price of Pesticides	33
Price list of agriculture machinery equipment	35
Feed and Fodder	36
Prices of Livestock inputs	37
Vaccination schedule for Livestock	40
Units of Measurements	42
Important Websites	43
List of Ministries, Constitutional Bodies and Agencies	44
Important contacts of the Ministry of Agriculture and Forests	45
Organogram	59



ལྷོ་མིག་འགྲུལ་བརྟག་པ་བརྒྱབ་ཞི།



མིག་འགྲུལ་བརྟག་པ་བརྒྱབ་ཞི་འདི།།སྟོན་རྩལ་ཐམས་ཅད་མཆུ་ན་པས་གསུངས།།མེས་པ་ལ་དབྱེད་དེ་བརྟག་པ་འཇུག་ན། །བཟང་དན་མདོན་ཤེས་ཐོགས་མེད་གསལ།།

ལྷོ་མིག་གཟུང་དང་ཕྱོག་གཟུང་བོ།

ཨང	༡	༢	༣	༤	༥	༦	༧	༨	༩	༡༠	༡༡	༡༢
ལྷོ་མིག་གཟུང་།	ཀྱི	མྱད	སྤག	ཡོས	འཇུག	སྐྱུལ	རྟ	ལྷག	སྐྱེལ	བྱ	ཆེ	པག
ལྷོ་ཕྱོག་གཟུང་།	སྤག	ཕྱད	ཕྱུག	ཕྱུམ	ཉིམ	མིག	མིག	པ་མངས	པ་མངས	པ་མངས	ཆྱབ	སྤག
ལྷོ་ཕྱོག་གཟུང་།	མིག	སྤག	ཕྱད	ཕྱུག	སྤག	པ་མངས	པ་མངས	ཆྱབ	ཕྱུམ	ཕྱུམ	སྤག	མིག
ལྷོ་གཞེད་གཟུང་།	ཕྱུག	ཕྱུམ	པ་མངས	པ་མངས	ཕྱུམ	སྤག	སྤག	ཕྱུམ	མིག	མིག	སྤག	ཕྱུམ

ལྷོ་གོང་གསལ་ལྟར་ ཡོན་བདག་མོ་མིའི་སྐྱ་གཟུང་ཕྱོག་གཟུང་བའི་ན་རབ་དང་ དེ་ལྷན་མ་ཡིན་པའི་ གཟུང་སྐྱར་དན་པའི་སྐྱེ་ གཞིན་གཟུང་གཞིན་སྐྱར་འཛོམས་ན་སྐྱར་དེ་མོས་པ་ལྷ་ཅི་ཐ་ན་ གཟུང་སྐྱར་ བཟང་པོ་ཤར་ཡང་ གཞིན་གཟུང་དང་གཞིན་སྐྱར་པ་སྐྱག་ན་པས་དང་བྱ་བ་རྣམས་ཅེས་ །ཀྱང་འཛོམས་གནང་བར་གྱུ། །

ལྷོ་རབ་གནས་མི་དབང་སྐྱབས་ཀྱི་རྩལ་བ་སྐྱོད་པའི་བགེགས་ཀྱི་རྒྱ་ལས་བརྒྱགས་མོ།

ཚོས་གྲངས་ཀྱི་གནས་ རྣམས།	༡	༢	༣	༤	༥	༦	༧	༨	༩	༡༠	༡༡	༡༢	༡༣	༡༤	༡༥
གཏོར་མ་བཏང་བའི་ཕྱོགས།	ལྷབ	སྟོར	བྱང	ཤར	ལྷབ	ཤར	བྱང	ལྷབ	སྟོར	སྟོར	ཤར	སྟོར་ལྷབ	བྱང	ཤར	བྱང
ཚོས་གྲངས་ཀྱི་གནས་ལྷགས།	༡༦	༡༧	༡༨	༡༩	༢༠	༢༡	༢༢	༢༣	༢༤	༢༥	༢༦	༢༧	༢༨	༢༩	༣༠
གཏོར་མ་བཏང་བའི་ཕྱོགས།	སྟོར	བྱང	ལྷབ	སྟོར	ལྷབ	ཤར	སྟོར་བྱང	སྟོར	བྱང	ཤར	བྱང	སྟོར	བྱང	སྟོར	སྟོར



༩ བྱང་རྒྱལ་སེམས་དཔའི་ སྐྱའི་ལུ་ལས་ འབྱུང་བ་ལྟར་ རྒྱ་བ་ལ་ རྩལ་མེད་པར་  
དབུ་སྐྱ་བསེལ་བའི་ དུས་ཚོས་ཀྱི་རྩལ་པར།

ཚོས།	འཇུག་ལྗོན།	ཚོས།	འཇུག་ལྗོན།	ཚོས།	འཇུག་ལྗོན།
༡	ཚོ་ལྷུང།	༡༡	དབང་པོ་རྫོ།	༢༡	ནད་འོང།
༢	ནད་མང།	༡༢	སྲོག་ལ་ཉེན།	༢༢	ཟས་སྐོམ་སྟེད།
༣	ཟུག་པོ་འོང།	༡༣	ཀུན་ལ་བཟང།	༢༣	བཟང་པོ་འོང།
༤	མདངས་དང་ལྷན།	༡༤	ཟུག་པོ་འོང།	༢༤	མིག་ན།
༥	ནོར་འཕེལ།	༡༥	བཀྲ་ཤིས།	༢༥	རིམས་འོང།
༦	ཁ་མཚུ་འོང།	༡༦	སྐོམ་འོང།	༢༦	རྟག་ཏུ་སྦྱིད།
༧	མདངས་ཡལ།	༡༧	ཤ་རྩི་སྟོ།	༢༧	དགོ་བ་འཕེལ།
༨	ཚོ་རིང།	༡༨	ནོར་གཏེར།	༢༨	འཐབ་མོ་འོང།
༩	ན་རྒྱུད་འབྲས།	༡༩	བཟང་པོ་དང་འབྲས།	༢༩	སྐྱ་འབྱུལ།
༡༠	དབང་ཐང་ཚེ།	༢༠	སྟོག་སྐོམ་འོང།	༣༠	གཤིན་སྦྱིན་དང་འབྲས།

## **12<sup>th</sup> Five Year Plan**

### **VISION**

Sustainable natural resources for the equitable social and economic well being of the Bhutanese people and the nation wide

### **MISSION**

To ensure sustainable social and economic well-being of the Bhutanese people through adequate access to food and natural resources

### **GOAL**

Achieve food self-sufficiency for a prosperous and self-reliant society living in harmony with nature

### **OBJECTIVES**

- To enhance food and nutrition security
- To enhance the RNR sector contribution to the national economy
- To enhance sustainable management and utilisation of Natural Resources
- To enhance effective and efficient delivery of RNR services

## Royalty rate on Forestry Products for commercial purpose

### Royalty tree class (standing basis)

#### Special class

Scientific Name	Dzongkha	Sharchop	Lhotsham	English
<i>Acacia catechu</i>	Toeja	Toeja	Khair	Khair
<i>Aquilaria agalocha</i>	Agoor	Agoor	Aghoree	Agarwood
<i>Carpinus viminea</i>	Rotoshing	Loong shing	-	Horbeam
<i>Cupressus</i>	Tsendey	Tsenden shing	Dhupi	Cypress
<i>Dalbergia sissoo</i>	Jaseng	Jasengshing	Sisoo	Sisoo
<i>Dalbergia latifolia</i>	-	-	-	Rosewood
<i>Juglans regia</i>	Ta-shing	Kheshing	Okhar	Walnut
<i>Junipers spp</i>	Shoop	Shoopu shing	Dhupi	Juniper
<i>Morus laevigata</i>	Tshendey	Phroom-Tekpa	Kimbu	Malberry
<i>Shorearobusta</i>	Gotenshing	-	Sakhua	Sal
<i>Taxus baccata</i>	Hashing	Keerangshing	Dhengresalla	Yew
<i>Tectona grandis</i>	Ha-shing	Keerangshing	Sagoon	Teak

**Note:** Allotment of standing tree belonging to special class is banned and will be supplied by DoFPS. This is with reference to letter no. M(1)/MoA/MISCE/2004/445, dated 16 April 2004.

#### “A” class

Scientific Name	Dzongkha	Sharchop	Lhotsham	English
<i>Acerspp</i>	Pchalam	Sermalingshing	Kapasey	Maple
<i>Albizia lebbeck</i>	Khrithangshing	-	Kaloseris	-
<i>Betula alnoides</i>	Taab	Chharshing	Saur	Birch
<i>Betula bhutanica</i>	Taab	Chharshing	Bhoj Patra	Birch
<i>Dipterocarpus acrocarpus</i>	-	-	-	-
<i>Duabanga grandiflora</i>	-	-	Lampatey	-
<i>Gmelina arborea</i>	-	-	Gamari	-
<i>Michelia champaca</i>	Khashing	Karshing	Champ	-
<i>Michelia excelsa</i>	Khashing	Champayshing	Rani champ	-
<i>Phoebe goalparensis</i>	Theinab	Sechanglushing	Bonsum	-
<i>Pinus wallichiana</i>	Tongphu	Changshing	Dhubi	Bluepine
<i>Pinus bhutanica</i>	Tongphu	Changshing	Salla	Bhutan pine
<i>Terminalia myriocarpa</i>	Bushing	Bakhaloshing	Panisaj	Terminlia
<i>Terminalia tomentosa</i>	Alashing	Bakhaloshing	Pakhasaj	Terminlia

**“B” class: All timber species, which are not covered under special class and A class shall be classified and grouped under class B.**

Royalty Class	Girth Class	Rate in Nu./Tree
Special class	3' to 3'11"	320
	4' to 4'11"	600
	5' to 5'11"	1200
	6' to 6'11"	1800
	7' to 7'11"	2600
	8' to 9'11"	3400
	10' and over	4000
A class	3' to 3'11"	240
	4' to 4'11"	480
	5' to 5'11"	740
	6' to 6'11"	1100
	7' to 7'11"	1400
	8' to 9'11"	1840
	10' and over	2200
B class	3' to 3'11"	140
	4' to 4'11"	240
	5' to 5'11"	480
	6' to 6'11"	680
	7' to 7'11"	840
	8' to 9'11"	1020
	10' and over	1220

### Royalty for Timber in log form

Royalty class	Rate (cft)	
	4'11" & below	5' & above
Special class	18	24
A class	18	
B class	11	

### Royalty for Timber in sawn form

Royalty class	Rate in Nu. per cft
Special class	21
A class	18
B class	12

## Royalty for Timber with cull

Cull%	Reduction in Royalty
Timber cull up to 25%	Nil (Full royalty)
Timber cull up to 26-50%	25% of the schedule rate
Timber cull up to 51-75%	50% of the schedule rate
Timber cull above 75%	75% of the schedule rate

## Royalty for Hakaries (Industrial wood) up to 6' length only

Type	Royalty class	Rate in Nu. per cft
Round	Special class	16
	Blue pine	12
	A class	
	Mixed conifer	10
	Other	10
	B class	
Splitted	Special class	Firewood rate
Do	Other than special class	

## Royalty for Slab/Bakals/Offcuts

Type	Rate in Nu. Existing
Bakals/Slabs	2/ps
Mill off cuts hardwood	
Soft wood	

## Shingle

Type	Rate in Nu. Existing
Ready made	0.90/ps

## Firewood

Type	Unit	Rate in Nu.
Hardwood	M <sup>3</sup> (cubic metre)	22.5
	TL (truckload)	180
Softwood	M <sup>3</sup> (cubic metre)	10
	TL (truckload)	80

## Approved Non-Wood Forest Products (NWFPs) royalty rates

Sl. No.	Scientific Name	Trade Name	Local Name	Parts Harvested	Unit	Rate in Nu.
1	<i>Aconitum spp.</i>	Aconite	Tsendhoog	Roots	Kg	20
2	<i>Apis spp</i>	<i>Bee wax</i>	Rum(Sha)	-	Kg	16
		<i>Honey</i>	Zhing (Sha)	-	Kg	20
3	<i>Apis spp</i>	Honey	Zhing (Sha)	-	Kg	20
4	<i>Astilbe rivularis</i>	-	Tongser gugay	Roots	Kg	4
5	<i>Rhododendronspp.</i>	Azelia	-	Leaves /plants	Kg	4
6	<i>Bombax ceiba</i>	Cotton pod	Pemageysershing	Flower	Kg	2
7	<i>Calamus spp.</i>	Rattan	Patsha	Stem	T/L	800
8	<i>Canarium skkimensis</i>	Dhup	Peykar	Resin	HL	4
					Kg	2
9	<i>Cinnamomum Tamala</i>	Tezpat	-	Bark	Kg	30
10	<i>Cinnamomun spp.</i>	Dalchini	-	Leaf	Bundle	24
11	<i>Cymbopogon flexuosus</i>	Lemon grass	Sorbang	Grass	Ltrs	5
12	<i>Ophiocordyceps sinensis</i>	Chinese caterpillar	Yartsa guenbub	Whole body	Kg	8400
13	<i>Daphne bholuua</i>	Daphne	Deynap	Bark	Kg	0.60
14	<i>Dendrocalamus spp.</i>	Large Bamboo	Baa/Soo	Stem	Pc	2
15	<i>Edgeworthia gardneri</i>	-	Deykap	Bark	TL	160
					Kg	0.60
16	<i>Phyllanthus emblica</i>	Amala	Chooru	Fruit	Kg	5
17	<i>Fargesia spp.</i>	Small bamboo	-	-	Pc	1
18	<i>Gymnadenia spp</i>	-	Wangpo Lakpa	-	TL	120
					Kg	2
19	<i>Gynocordia odorata</i>	-	Gantay	-	Kg	4
20	<i>Illicium griffithii</i>	Star anise	Dhomleeshing	Fruit	Kg	2
21	<i>Lacifera lacca</i>	Lac	Tatsho		Kg	8
22	<i>Lycopodium spp.</i>	Lycopodium	Zalagadang (Sha)	Creeper	Kg	57
23	<i>Nardostachys grandiflore</i>	-	Pang-poe	Whole plant	Kg	2
24	<i>Pouzolzia sanguinea</i>	-	Kawla	Whole plant	Kg	2
25	<i>Picorrhiza spp.</i>	Kutki	Putishing	Whole plant	Kg	12
26	<i>Pinus roxburghii</i>	Resin	Thangchuu	Resin	Kg	4
27	<i>Piper longum</i>	Pipla long	Piploting	Fruit	Kg	30
28	<i>Piper pedicellatum</i>	Pipla round	Piploting	Fruit	Kg	20
29	<i>Piper betuloid</i>	-	Pani	Leaves	Kg	4
30	<i>Rawwaufia serpentine</i>	Sarpghanda	Nagbeli	Plant	Kg	20



Sl. No.	Scientific Name	Trade Name	Local Name	Parts Harvested	Unit	Rate in Nu.
31	<i>Rhododendron anthopogon</i>	-	Baloo	Leave	Kg	2
32	<i>Rubia cordifolia</i>	Rubia	Tsoy	Plant	Kg	16
33	<i>Saccharum spp</i>	-	Thatch	-	HL	0.10
34	<i>Sapindus mukorossi</i>	Ritha	Nakupani	Fruit	Kg	16
35	<i>Asphaltum punjabianum</i>	Shilajit	Dragzhuen	-	Kg	8
36	<i>Swertia chirayita</i>	Chireta	Latij	Plant	Kg	24
37	<i>Tanacetum spp.</i>	-	Kheng kaar	Plant	Kg	2
38	<i>Taxus baccata</i>	Yew	Ha shing	Leaves & bark	Kg	10
39	<i>Terminalia ballerica</i>	Baroo	Baroo	Fruit	Kg	5
40	<i>Terminalia chebula</i>	Arroo	Arroo	Fruit	Kg	5
41	<i>Thysanolaena latifolia</i>	Broom grass	Tsakusha	Inflorescence	HL	3
42	<i>Viscum articulatum</i>	-	Ngenshee- thip	Whole plant	Kg	5
43	<i>Yushania spp</i>	Bamboo	Maling-bamboo	-	Bundle	8
44	<i>Zanthoxylum spp</i>	-	Thing-Ngay	Fruit	Kg	4
45	<i>Neomicrocalamus andropogonifolius</i>	Reed	Ringshoo	-	H/L	0.10
46	<i>Abiesdensa, Pinus wallichii, Peciaspinusulosa, Tsuga dumosa</i>	Fir, BP, Spruce, Hemlock	-	Leaf needle	TL	26
					HL	3
47	<i>Juniper spp</i>	Juniper	Shoop	Leaf needle	TL	40
					HL	4
48	<i>Cymbidium spp.</i>	Orchid	Olatshy	-	Clump	40
49	-	-	Sand, clay, gravel and boulders	-	TL	40
50	-	Fodder	-	-	Bundle	4
51	-	Plough wood	Khami	Wood	Pc	10
52	Wangri and Khejum (Dhup)	-	-	-	Kg	.40
53	Hard decorative fruit	-	-	-	Kg	4
54	<i>Tricholoma matsutake</i>	Mushroom	Matsutake	-	Kg	20
			Other	-	Kg	4
55	-	Decorative flowers	Metog	Stem & flower	Cluster	4
56	Burr	Burr	Zaa/Baa	Wood	Pc	10
57	Forest top soil	Forest top soil	Saa	-	TL	100
58	Leaf mould	Leaf mould	Luei	-	TL	40

Sl. No.	Scientific Name	Trade Name	Local Name	Parts Harvested	Unit	Rate in Nu.
59	Colour soil	Colour soil	Saa	-	Kg	2
60	Charcoal	Charcoal	Semo	-	Kg	0.20
61	Cones of pines	Cones	-	-	TL	20
62	Wildling	-	Shing	-	Pc	1
63	Acacia catechu	Khair	Toe-jashing	-	Pc	30
64	Mushroom billet	Billet	-	-	Pc	1
65	Leave of BP/Fir	Incense	Sang	-	TL	20
					HL	2
66	Leaves of Juniper	Incense	Sang	-	TL	40

## Approved Interim royalty rates

Sl. No.	Scientific Name	Trade Name	Local Name	Parts Harvested	Unit	Rate in Nu
1	<i>Paris polyphylla</i>	Satuwa	Thoksampa	Rhizome	Kg	15
2	-	Edible Mushrooms	Shamu	Whole fungi	Kg	6
3	<i>Knema tenuinervia</i>	-	Duruka	Ariel parts	Kg	5
4	<i>Primula sikkimensis</i>	Primula rose	Shangdril marpo	Flower	Kg	10
5	<i>Exidia recisa</i>	Exidia mushroom	Sew shamong	Whole fungi	Kg	6
6	<i>Hippophae rhamnoides</i>	Sea buckthorn	Tarbu	Berry	Kg	4

## Schedule, Form, Quantity and Periodicity of Rural/subsidised Timber to be allotted

### a. Schedule of allotment

Sl. No.	Activity	Timeframe	Responsible Agency
1	Submission of application and verification of construction sites	June to September	Gewog Administration
2	Issuance of permit, marking and felling of trees	October to December	CIC/Division and Park or applicant
3	Extraction and transportation to construction site/sawmill	January to June	Applicant (Obtain COSDTMO and ITMO)
4	Monitoring and reporting	July to December	Division/Park
5	Submission of construction/renovation completion report to CFO	Within two years after construction approved	Gewog Administration and applicant

## b. New Rural House Construction

The maximum quantity of subsidised rural timber for new construction of rural house shall be in either of the following forms:

Option	Type of house	Timber type & quantity	Frequency
A	2 storied	4000 cft (log form) from NRDCL Depot or	Once in 25 years
		18 Drashing (standing tree)	
B	1 storied	2000 cft (log form) from NRDCL Depot or	
		09 Drashing (standing tree)	

## c. Rural timber for repair/renovation/extension of rural house

Subsidised rural timber shall be supplied up to the maximum limits specified below for repair/renovation/extension of rural houses:

Option	Timber type & quantity	Frequency
A	700 cft (log form) from NRDCL Depot or 03 Drashing (standing tree)	Once in 12 years

## d. Subsidised timber for other purposes (sheds for livestock, storehouse, farm guard or watch tower, toilet and machinery) in rural areas:

- An applicant shall be entitled for timber allotment for the above construction once in 5 (Five) years.
- The actual quantity of timber required, subject to the ceiling prescribed shall be approved by the Range Office after verification.
- Application for allotment of subsidised rural timber for other construction in rural areas shall be submitted in the prescribed form in Annexure XXIV Part A.

**e. Royalty rates applicable on timber for rural house construction/repair/renovation shall be as follows:**

Option	Type of timber	Girth	Royalty
1	Drashing	4'1" & above	Nu.40/Drashing
2	Tsim	1' to 2"	Nu.12/Tsim
3	Dangchung	Below 1'	Nu.4/Dangchung

### **Totally protected Plant species listed in schedule I**

Sl. No.	Botanical Name	Common Name	Local name
1	<i>Aquilaria galocha</i>	Eagle wood/Indian Aloe wood	Agar/Aguru
2	<i>Gentiana crassuloides</i>	Gentianes	Pang-gen Metog
3	<i>Lloydia yunnanensis</i>	Snow down Lily	-
4	<i>Meconopsis gakyidiana</i>	Blue Poppy	Tsher-ngoan Metog
5	<i>Taxus baccata</i>	Himalayan Yew	Hashing
6	<i>Panaxpseudo ginseng</i>	Ginseng	Bhreeng-geera-dza
7	<i>Ophio cordyceps sinensis</i>	Chinese caterpillar	Yar-tsa-Goen-bup

### **Totally protected Wild Animals and Birds listed in schedule I**

Sl. No.	Common name	Scientific name
1	Common leopard	<i>Panthera uncia</i>
2	Takin	<i>Budorcas taxicolorwhiteii</i>
3	Pygmy Hog	<i>Sus salvanius</i>
4	Leopard	<i>Panthera pardus</i>
5	Tiger	<i>Panthera tigris tigris</i>
6	Red Panda	<i>Ailurus fulgens</i>
7	Leopard Cat	<i>Prionailurus bengalensis</i>
8	Asian Elephant	<i>Elephas maximus</i>
9	Golden Langur	<i>Trachypithecus geei</i>
10	Clouded Leopard	<i>Neofelis nebulosa</i>
11	Musk Deer	<i>Moschus chrysogaster</i>
12	Water Buffalo	<i>Bubalus arnee</i>
13	Indian Pangolin	<i>Manis carssicaudata</i>
14	Gaur	<i>Bos guarus</i>

Sl. No.	Common name	Scientific name
15	Himalayan Black Bear	<i>Selanarctos thibetanus</i>
16	Golden Mahseer	<i>Tortor</i>
17	Spotted Deer	<i>Axis axis</i>
18	Peacock Pheasant	<i>Polyplectronicalcaratum</i>
19	Raven	<i>Corvus corax</i>
20	Rufous-Necked Hornbill	<i>Acerosnepalensis</i>
21	Monal Pheasant	<i>Lophophorus impejanus</i>
22	Black-Necked Crane	<i>Grusnigricollis</i>
23	Himalayan Serow	<i>Capricornis thar</i>
24	White-bellied heron	<i>Ardeainsignis</i>

## Protected Areas and Biological Corridors of Bhutan

Total Area of Bhutan	38,394.00
Total area of PAs in Bhutan	19750.80
Percentage of Parks and Strict Nature Reserve	43.48
Percentage of Biological Corridors	7.73
Percentage of Conservation Areas (RBP)	0.24
Percentage of Protected Area Network in Bhutan	51.44

## Seed collection and sowing

Seed collection and sowing time differs from species to species. For the field ease, tree species with scientific (botanical) name and their local names, Dzongkha (Dz), Sharchop (Sh) and Lhotsam (Lh) are provided below:

Scientific Name	Local Name	Collection Time	Sowing Time	Approximate no. of seeds/kg
<i>Abies densa</i>	Dungshing (Dz), Wangshing (Sh), Fir (Eng)	Oct-Nov	Feb-Mar	16,700
<i>Acacia auriculiformis</i>	Jimshing (Dz), Lanungshing (Sh), Akashmoni (Lh)	Jan-Apr	Apr-May	40-50,000
<i>Acacia catechu</i>	Toeja (Dz/Sh), Khair (Lh)	Nov-Mar	Apr-May	32-40,000
<i>Acer campbellii</i>	Pchalam (Dz), Sermaling (Sh), Kapasi (Lh)	Nov-Dec	Mar-Apr	15-20,000
<i>Acrocarpus fraxinifolius</i>	Chashing (Dz), Choktseshing (Sh), Mandeny (Lh)	Apr-May	Apr-May	32,000
<i>Adina cordifolia</i>	Halwashing (Dz), Anashing (Sh), Haldu (Lh)	Mar-Jun	Mar-Jun	1,100,000
<i>Aesandra butyracea</i>	Yika (Dz), Pinshing (Sh), Chui (Lh)	Jun-July	Jan-Aug	450
<i>Ailanthus grandis</i>	Pekashing (Dz/Sh), Gokul (Lh)	Apr-May	Apr-May	1,700
<i>Albizia lebbeck</i>	Prekprekshing (Dz), Sershing (Sh), Kaloseris (Lh)	Dec-Feb	Mar-Apr	8-15,000
<i>Albizia procera</i>	Sekpalashing (Dz), Khirthangshing (Sh), Setoseris (Lh)	Dec-Jan	May-Jun	15-21,000
<i>Alnus nepalensis</i>	Gamashing (Dz), Gamoshing (Sh), Utis (Lh)	Dec-Mar	Mar-Apr	570,000
<i>Ammora wallichii</i>	Lasoshing (Dz), Phangshing (Sh), Lali (Lh)	Mar-May	Apr-May	132-155,000
<i>Anthocephalus cadamba</i>	Kadamshing (Dz), Kadam (Lh)	July-Aug	July-Aug	9-10,000
<i>Artocarpus heterophyllus</i>	Damtse (Dz), Dremlingshing (Sh), Jackfruit (Eng)	Jun-July	July	700-1,800
<i>Artocarpus lacucha</i>	Dramdey (Dz), Badahar (Lh)	Jun-Aug	July-Aug	100-150
<i>Aquilaria malaccensis</i>	Agoor (Dz), Aghori (Lh), Eagle wood (Eng)	Mar-June	Mar-Jun	6,000
<i>Bauhinia purpurea</i>	Zibzibshing (Dz), Pekpekshing (Sh), Tanki (Lh)	Feb-Mar	May-Jun	3-4,000
<i>Bauhinia variegata</i>	Ruchashing (Dz), Balingshing (Sh), Koiralo (Lh)	Mar-May	May-Jun	2-3,000
<i>Benthamedia capitata</i>	Phoitse (Dz), Namitpashing (Sh), ramkatar (Lh)	Oct-Dec	Feb-Mar	80-100
<i>Betula utilis</i>	Latap (Dz), Chharshing (Sh), Bhojpatra (Lh)	Aug-Oct	Jan-Mar	1,500,000
<i>Betula alnoides</i>	Taapshing (Dz), Chharshing (Sh), Saur (Lh)	Oct-Feb	Nov-Mar	5,000,000
<i>Bischofia javanica</i>	Chumshing (Dz), Kainjal (Lh)	Dec-Mar	Jan-Apr	60-100,000
<i>Bambax ceiba</i>	Pemagayser (Dz/Sh), Simal (Lh)	Mar-May	Apr-May	21-38,000
<i>Bridelia retusa</i>	Trretashing (Dz), Menchashing (Sh), Gayo (Lh)	Oct-Nov	Mar-Apr	15-18,000
<i>Carpinus viminia</i>	Rutoshing (Dz), Lung shing (Sh)	July-Oct	Feb-Mar	-
<i>Cassia fistula</i>	Chakajumshing (Dz), Dhongkashing (Sh), Rajbricksha (Lh)	Mar-Apr	Apr-Mar	6,300
<i>Castanopsis hystrix</i>	Sokeyshing (Dz), Tshashing (Sh), Patleykatus (Lh)	Oct-Nov	Dec-Jan	5-700
<i>Castanopsis tribuloides</i>	Thomsokey (Dz), Thongpashing (Sh), Musreykatus (Lh)	Nov-Jan	Mar-Apr	400
<i>Cedrus deodara</i>	Shubdarshing (Dz), Deodar (Co), Cedar (Eng)	Oct-Dec	Dec-Jan	7,900
<i>Celtis australis</i>	Sokum (Dz), Sogsogpashing (Sh), Khari (Lh)	Oct-Dec	March	4500-11,000
<i>Choerosondias axil-laris</i>	Charashing (Dz), Throongchung (Sh), Lapsi (Lh)	Nov-Feb	Mar-Apr	300
<i>Chukrasia tabularis</i>	Chuzim (Dz), Checkrasi (Co)	Mar-June	May-Jun	100,000

Scientific Name	Local Name	Collection Time	Sowing Time	Approximate no. of seeds/kg
<i>Cinamomum camphora</i>	Peomenshing (Dz), Kapur (Lh), Camphor (Eng)	Sep-Nov	Feb-Mar	5-11,000
<i>Cinamomum glaucescens</i>	Shingsazim (Dz), Durkashing(Sh), Maligari (Lh)	Oct-Nov	Mar-Apr	2,000
<i>Cryptomeria japonica</i>	Jatsenshing (Dz), Dhongkalashing (Sh), Crypto-meri (Co)	Oct-Nov	Jan-Mar	2-300,000
<i>Cupressus himaliaca</i>	Tsenden (Dz), Tsendenshing (Sh), Dhupi (Lh)	Oct-Nov	Nov-Jan	1-250,000
<i>Cupressus torulsa</i>	Tsenden (Dz), Tsendenshing (Sh), Dhupi (Lh)	Dec-Mar	Feb-Mar	250,000
<i>Dalbergia sissoo</i>	Sissooshing (Dz), Sisoo (Lh)	Mar-May	Feb-Apr	50,000
<i>Duabanga grandiflora</i>	Patangshing(Dz), Grandanglashing (Sh), Lampatey (Lh)	Nov-Feb	May-Jun	3-4000,000
<i>Daphniphyllum himalense</i>	Jurooshing (Dz), Aawashing (Sh), Lal chandan (Lh)	Nov-Dec	Jan-Mar	2,000
<i>Eleacarpus spp</i>	Quequeshing (Dz), Gashathungshing (Sh), Badrasey (Lh)	Nov-Feb	May-Jun	-
<i>Erythrina arborescens</i>	Chaseeshing (Dz), Kharshing (Sh), Faledo (Lh)	June-Aug	Apr-Jun	2,000
<i>Erythrina variegata</i>	Thasachasee (Dz), Kharshing (Sh), Faledo (Lh)	June-Aug	Apr-May	2,000
<i>Exbucklandia populnea</i>	Chenjushing (Dz), Lemshing (Sh), Pipli (Lh)	Dec-Mar	Mar-Apr	200,000
<i>Ficus roxburghii</i>	Bakushing (Dz), Chongmashing (Sh), Nebaro (Lh)	Jun-Sep	Jul-Aug	8,000,000
<i>Ficus religiosa</i>	Jangchubshing (Dz/Sh), Pipal (Lh)	Apr-May	May-Jun	2,000,000
<i>Ficus semicordata</i>	Ridangshing (Dz), Barachongma (Sh), Khanew (Lh)	July-Aug	Jul-Aug	1,000,000
<i>Fraxinus floribunda</i>	Draythub (Dz), Lakuri (Lh), Ash (Eng)	Sep-Oct	Mar-Apr	7,400
<i>Gmelina arborea</i>	Gamarshing (Dz), kholomshing (Sh), Khamari (Lh)	Apr-June	Apr-Jun	2,000
<i>Jacaranda mimosifolia</i>	Jakashing (Dz), Jacaranda (Co)	Feb-Mar	Mar-Apr	50,000
<i>Juglans regia</i>	Tashing (Dz), Ksheshing (Sh), Okhar (Lh)	Sep-Dec	Feb-Mar	135
<i>Juniperus recurva</i>	Shupshing (Dz), Shokpashing (Sh), Juniper (Eng)	Apr-June	Apr-Jun	3,600
<i>Kydia calicina</i>	Chambaktangshing (Sh), Kubindey (Lh)	Dec-Mar	Mar-Apr	2,000,000
<i>Lagerstroemia hirsuta</i>	Dongkashing (Dz), Baramshing (Sh), Jarul (Lh)	Jan-Mar	Apr-May	120,000
<i>Lagerstroemia parviflora</i>	Dongkashing (Dz), Baramshing (Sh), Sidha (Lh)	Jan-Mar	Apr-May	3,600
<i>Larix griffithii</i>	Zashi (Dz), Larch (Eng)	Oct-Nov	Mar-Apr	100,000
<i>Leucaena leucocephala</i>	Ghanssir (Lh), Leucaena (Eng)	Nov-Jan	Apr-May	22-26,000
<i>Mangifera indica</i>	Aamchukuli (Dz), Aamshing (Sh), Amp (Lh)	May-Aug	Jul-Aug	20-30
<i>Magnolia campbellii</i>	Khashing (Dz), Karshing (Sh), Ghogechamp (Lh)	Aug-Sep	Sep-Oct	-
<i>Melia azedarach</i>	Jashing (Dz), Neyrashing (Sh), Bakaina (Lh)	Nov-Mar	MarJul	1,500
<i>Michelia champaca</i>	Kashing (Dz), Karshing (Sh), Aule Champ (Lh)	July-Aug	Jul-Aug	17,000
<i>Michelia doltsopa</i>	Khashing (Dz), Karshing (Sh), Rani Champ (Lh)	Aug-Sep	Sep-Oct	8400-12000
<i>Morus lavigata</i>	Tshendhey (Dz), Sengdenshing (Sh), Kimbu (Lh)	Mar-Apr	Mar-Apr	4-500,000
<i>Oroxylum indicum</i>	Champaka (Dz), Namkalingshing (Sh), Totola (Lh)	Dec-Feb	Feb-Mar	10-15,000
<i>Persea fructifera(fr)</i>	Gulingshing (Dz), Lapchekawla/Phuntse (Lh)	Nov-Jan	Feb-Mar	150-200
<i>Phoebe alternata</i>	Theinab (Dz), Angaray (Lh)	Sep-Oct	Feb-Mar	8000-10000
<i>Picea spinulosa</i>	Seshing ( Dz), Spruce (Eng)	Sep-Nov	Feb-Mar	64,000
<i>Pinus roxburghii</i>	Thetongphu (Dz), Roinashing (Sh), Chirpine (Eng)	Jan-Mar	Feb-Mar	12,000
<i>Pinus wallichiana</i>	Tongphu (Dz), Changshing (Sh), Bluepine (Eng)	Sep-Nov	Feb-Mar	25,000

Scientific Name	Local Name	Collection Time	Sowing Time	Approximate no. of seeds/kg
<i>Populus ciliata</i>	Kashing (Dz), Pipalpaty (Lh), Poplar (Eng)	Apr-Jun	Jun-Jul	Cutting
<i>Prunus nepalensis (fr)</i>	Khangoshing (Dz/Sh), Aru-patey (Lh)	Oct-Dec	Mar-Apr	1,400
<i>Pteropsersum acerifolium</i>	Dhashom (Dz), Mongnangshing (Sh), Hatipaley (Lh)	Jun-Jul	Jul-Aug	3600
<i>Quercus griffithii</i>	Sissishing (Dz), Bainangshing (Sh), Khasru (Lh)	Nov-Feb	Feb-Mar	5-700
<i>Quercus lanata</i>	Ghum (Dz), Beytsenangshing (Sh)	Nov-Dec	Feb-Mar	170
<i>Quercus lamellosa</i>	Bangkashing (Dz), Fangkoimashing (Sh), Bajranth	Oct-Dec	Feb-Mar	25-30
<i>Quercus semicarpifolia</i>	Bjishing (Dz), Beytsenangshing (Sh), Khasru (Lh)	Jun-Aug	Jul-Aug	140
<i>Rhododendron arboreum</i>	Actoshing (Dz), Yudangshing (sh), Gurans (Lh)	Aug-Mar	Mar-Apr	1,200,000
<i>Robinia pseudoacacia (p)</i>	Chhashing (Dz), Robinia (Co)	Oct-Dec	Feb-Mar	35,50,000
<i>Salix babylonica</i>	Changmashing (Dz/Sh), Willow (Eng)	Apr-May	Apr-May	Cutting
<i>Sapindus mukorossi</i>	Nakapani (Dz), Kilingshing (Sh), Ritha (Lh)	Sep-Feb	Apr-May	770-840
<i>Saurauia nepalensis</i>	Mangmadom (Dz), Gogun (Lh)	Mar-Apr	Mar-Apr	4-8,000,000
<i>Schima wallichii</i>	Puyamshing (Dz), Zalashing (Sh), Chilauney (Lh)	Jan-Apr	Apr-May	300,000
<i>Shorea robusta (ws)</i>	Gotenshing (Dz), Sal (Co)	May-Jun	May-Jun	450-1000
<i>Stereospermum suaveolens</i>	Tsarimshing (Dz), Aboshing (Sh), Parari (Lh)	Dec-Jan	Jun-Jul	27000
<i>Syzygium cumini</i>	Nyeshing (Dz), MitsHING (Sh), Jamuna (Lh)	June-Aug	Jul-Aug	1-1,300
<i>Taxus baccata</i>	Hashing/ Kerangshing (Dz/Sh), Yew (Eng)	Nov-Dec	Feb-Mar	8,000
<i>Tectona grandis(fr)</i>	Tsomarshing (Dz), Sogun (Lh), Teak (Eng)	Dec-Feb	Feb-Mar	2,500
<i>Terminalia myriocarpa (ws)</i>	Bupshing (Dz), Bakhaloshing (Sh), Panisaj (Lh)	Dec-Jan	Mar-Apr	100,000
<i>Terminalia tomentosa</i>	Alashing (Dz), Pakhasaj (Lh)	Oct-Dec	Apr-May	700
<i>Terminalia bellerica</i>	Baru (Dz/Sh), Barra (Lh)	Nov-Feb	Feb-Mar	-
<i>Terminalia chebula</i>	Aru (Dz/Sh), Harra (Lh)	Dec-Mar	Feb-Mar	-
<i>Thuja orientalis</i>	Yutashupshing (Dz), Mayurpankhi (Lh), Thuja (Co)	Oct-Dec	Oct-Dec	40-60,000
<i>Toona ciliata</i>	Chhungshing (Dz), Rawashing (Sh), Tooni (Lh)	Apr-June	May-Jun	550,000
<i>Tetrameles nudiflora</i>	Kadongshing (Dz), Maina (Lh)	May-June	Mar-Apr	-
<i>Tetradium frax-inifolium (Evodia fraxinifolium)</i>	Dongmarshing (Dz), Khanakpa (Lh)	Nov-Feb	Dec-Feb	-
<i>Tsuga dumosa</i>	Bashing (Dz), Wangashing (Sh), Hemlock (Eng)	Nov-Dec	Mar-Apr	400,000
<i>Zanthoxylum armatum</i>	Thinkneyshing (Dz), Geshing (Sh), Timbur (Lh)	June-Aug	Mar-Apr	40-60,000
<i>Zizyphus jujuba</i>	Tsoshing (Dz), Bayer (Lh)	Dec-Mar	Feb-Mar	7-1,800

**Note:** S=stone, Fr=fruits, P=pods, Ws=Wing seed and the rest is clean seeds.

Seeds should be collected from the locally available selected trees (plus trees). Plus trees are those trees which are middle aged to near maturity, dominant, vigorously growing having good form, straight cylindrical boles, clean stems, good crown development and free from diseases and infections.

For details, please refer to norms and standards for nursery and plantation-2008.

**Source:** Social Forestry and Extension Division



## Percentage of Protected Areas (PAs) and Biological Corridors (BCs)

Sl. No.	Protected Area and Biological Corridor	Notification Year	Establishment Year	Dzongkhags	Area (km sq)	Remarks
1	Bumdeling Wildlife Sanctuary (BWS)	1993	1998	Lhuentse, Mongar and Trashiyangtse	1,534.237921	Erstwhile known as Kulong Chu Wildlife Sanctuary till it was renamed in 1994
2	Jigme Dorji NP (JDNP)	1993	1995	Gasa, paro, Punakha and Thimphu	4374.059573	Was notified after merging the Wildlife Sanctuaries of Laya, Gasa and Jigme Dorji which were notified in 1974
3	Jigme Khesar Strict Nature Reserve (JKSNR)	1993	2010	Haa and Samtse	784.2248521	Erstwhile known as a Torsa Strict Nature Reserve till it was renamed in 2015
4	Jigme Singye Wangchuck NP (JSWNP)	1993	1995	Sarpang, Trongsa, Tsirang, Wangdue and Zhemgang	1730.058201	Was notified as Khaling/ Neolo Wildlife Sanctuary by merging the Khaling Reserve Forest and Neoli Wildlife Reserve which were notified in 1974 and 1983 respectively
5	Jomotshangkha Wildlife Sanctuary	1993	2016	Samdrup Jongkhar	362.4913546	Erstwhile known as Khaling/Neoli Wildlife Sanctuary till it was renamed in 2015
6	Phrumsengla NP (PNP)	1993	2000	Bumthang, Lhuentse, Mongar and Zhemgang	906.6527375	Erstwhile known as Thrumshingla National Park till it was renamed in 2015
7	Phibsoo Wildlife Sanctuary (PWS)	1993	2009	Sarpang and Dagana	286.8285687	Formed from Mochu Reserve Forest notified in 1974 and renamed as Phibsoo Wildlife Sanctuary
8	Royal Manas NP (RMNP)	1993	1995	Pemagatshel, Sarpang and Zhemgang	1,057.397329	Notified as RMNP in 1993 after merging the Manas Wildlife Sanctuary and Goley Game Reserve which were initially notified in 1966 and 1974 respectively
9	Sakteng Wildlife Sanctuary (SWS)	1993	2003	Trashigang	742.4630824	
10	Wangchuck Centennial NP (WCNP)	2008	2008	Bumthang, Lhuentse, Wangdue, Gas and Trongsa	4914.651403	Renamed from Wangchuck Centennial Park in 2015

Sl. No.	Protected Area and Biological Corridor	Notification Year	Establishment Year	Dzongkhags	Area (km sq)	Remarks
11	Royal Botanical Park (RBP)	2004	2004	Punakha and Thimphu	91.1965894	
12	JDNP-JKSNR Biological Corridor (BC1)			Haa and Paro	255.5486124	
13	RBP-JSWNP Biological Corridor (BC2)			Wangdue	291.7576186	
14	JSWNP-PWS-RMNP Biological Corridor (BC3)	1999	2007	Sarpang and Tsirang	407.6965914	
15	JSWNP-PNP-RMNP Biological Corridor (BC4)			Trongsa and Zhemgang	594.6535895	
16	JWS-RMNP Biological Corridor (BC5)			Pemagatshel and Samdrup Jongkhar	205.8407225	
17	JWS-SWS Biological Corridor (BC6)			Samdrup Jongkhar and Trashigang	232.7709496	
18	BWS-PNP-WCNP Biological Corridor (BC7)			Lhuentse and Mongar	4196636305	
19	JSWNP-WCNP Biological Corridor (BC8)			Trongsa and Wangdue	558.6043815	

Source: Forest Resources Management Division

## Prices of Seeds, Seedlings and Fertilisers

Commodity		Price	Remarks
A	Vegetable seeds	Nu/pkt	Packing unit
1	Beans (Borlotto-Climber & Dwarf)	13	50 g/pkt
2	Beans (Pole bean white)	18	50 g/pkt
3	Beans (Rajma)	13	50 g/pkt
4	Beans (Top crop)	18	50 g/pkt
5	Beetroot (DDR)	15	10 g/pkt
6	Bitter Gourd-Hybrid	32	10 g/pkt
7	Bottle Gourd (Hybrid)	32	10 g/pkt
8	Brinjal-PP Long	15	10 g/pkt
9	Broccoli (Dessico)	13	10 g/pkt
10	Broccoli-Hyb (Centauro)	226	10 g/pkt
11	Bunching Onion (No-21)	25	10 g/pkt
12	Cabbage-Hyb (Golden & Bondy cross)	149	10 g/pkt
13	Cabbage-Hyb (Green coronet)	137	10 g/pkt
14	Cabbage-OP (Golden Acre)	32	10 g/pkt
15	Carrot (N. Kuroda)	22	10 g/pkt
16	Carrot-Hyb (ASC)	95	10 g/pkt
17	Cauliflower (Wengkar early)	19	10 g/pkt
18	Cauliflower-Hyb (Snow mystique)	177	10 g/pkt
19	Chilli IR-8	13	10 g/pkt
20	Chilli-Sha ema	20	10 g/pkt
21	Chilli SHP 4884 (Hyb)	322	7.22 g/pkt
22	Chilli SV 2319 (Hyb)	309	7 g/pkt
23	Chinese Cabbage-Kyoto	13	10 g/pkt
24	Coriander-Local	15	10 g/pkt
25	Cucumber-Frontier	100	10 g/pkt
26	Cucumber-Santon No 1	29	10 g/pkt
27	Cucumber-Shabi Genchu	23	10 g/pkt
28	Garlic	195	20 kg/pkt
29	Ginger (local)	100	20 kg/pkt
30	Japanese Green-Mibuna	15	10 g/pkt
31	Japanese Green-Taisai	15	10 g/pkt
32	Lady Finger-Kranti	18	10 g/pkt
33	Lettuce (Great Lake)	29	10 g/pkt
34	Mustard Green-Sag-Him Beauty	15	10 g/pkt
35	Onion (OP/ B-Red)	22	10 g/pkt
36	Onion (Pune Red-Hybrid)	25	10 g/pkt
37	Peas-Arkel	13	50 g/pkt

	<b>Commodity</b>	<b>Price</b>	<b>Remarks</b>
38	Peas-Mr. Big	13	50 g/pkt
39	Peas-Usui	13	50 g/pkt
40	Pumpkin -Tetsu Kabuto	15	10 g/pkt
41	Radish-35 days	11	10 g/pkt
42	Radish-Minowase	13	10 g/pkt
43	Radish-Spring Tokinashi (SPTN)	20	10 g/pkt
44	Spinach-All Green	13	10 g/pkt
45	Spinach-Leaf Beet	13	10 g/pkt
46	Summer Squash-Zucchini	15	10 g/pkt
47	Tomato-Bajo Lambenda 1 (Ratan)	18	5 g/pkt
48	Tomato-PS-61 (Hybrid)	122	5 g/pkt
49	Tomato-Roma	18	5 g/pkt
50	Turnip-Purple Top White Globe (PTWG)	13	10 g/pkt
51	Watermelon (Sugar Baby)	22	10 g/pkt
<b>B</b>	<b>New packaging size of 500 g</b>	<b>Nu/pkt</b>	<b>Packing unit</b>
1	Beetroot (DDR)	489	500 g/pkt
3	Borlotto (Indeterminate)	95	500 g/pkt
2	Carrot (N/K)	837	500 g/pkt
5	Onion (B/Red)	953	500 g/pkt
6	Onion (Pune Red-Hybrid)	837	500 g/pkt
4	Peas (Usui)	95	500 g/pkt
<b>C</b>	<b>Temperate fruit plants</b>	<b>Nu/ seedling</b>	<b>Packing unit</b>
1	Almond-Kahzi	100	seedlings
2	Apple-Royal, Red, Golden & Shekhaichi	90	5 seedlings/bundle
3	Apricot-Shakharpara/July Elberta	100	5 seedlings/bundle
4	Asparagus seedlings (MW)	4	100 seedlings/bundle
5	Cherry-Seneka/Jabouny	90	5 seedlings/bundle
6	Chestnut-Jeuphu-1	60	single pot
7	Peach-Nonomiwase/Bajokham-2 (July Elberta)	100	5 seedlings/bundle
8	Pear-Hosui/Kosui/Chujoro/William	96	5 seedlings/bundle
9	Persimmon-Fuyu/Jiro/Wengkhar Anday-1	125	5 seedlings/bundle
10	Plum-Stanley/Santarosa	100	5 seedlings/bundle
11	Straw berry-Yusi sagong-1, Pangtshalu Ngarm & Maap	9	single pot
12	Walnut-Kagzi (Grafted)	205	5 seedlings/bundle
<b>D</b>	<b>Sub-tropical fruit plants</b>	<b>Nu/seedling</b>	<b>Packing unit</b>
1	Areca nut-Bhur S-1	55	single pot
2	Avocado-Bajo Gule-1(Haas)/Bajo Gule-2 (Bacon)	150	single pot
3	Banana-Chini Champa/Jahaji/Gewkola/G-9	50	single pot

	<b>Commodity</b>	<b>Price</b>	<b>Remarks</b>
4	Citrus seedling-Dorokha selection	50	single pot
5	Cardamom suckers-Barlangey	10	100 suckers/bundle
6	Dragon fruit (Gewaringpa-1)	15	single pot
7	Gauva-Bebsew Shakha (Pink flesh)	45	single pot
8	Jack fruit-Bhur S-1	21	single pot
9	Litchi-Early Bedana/Shahi/Bhur selection-1	75	single pot
10	Mango-Langra/Amrapali/Dasheri/Chausa	85	single pot
11	Papaya-Local	23	single pot
12	Passion fruit (Local)	20	single pot
13	Pine apple-kew (Spinless)/Queen	25	15 suckers/bag
14	Pomegranate-Bedana	50	single pot
<b>E</b>	<b>Potato</b>	<b>Nu/kg</b>	<b>Packing unit</b>
1	Red varieties	27	50 kg/bag
2	White varieties	26	50 kg/bag
<b>F</b>	<b>Oil Seeds</b>	<b>Nu/kg</b>	<b>Packing unit</b>
1	Mustard seeds (M-27/Yusi peka 1&2)	90	5 kg/bag
2	Soy bean (Lebi-1)	86	5 kg/bag
<b>G</b>	<b>Cereals</b>	<b>Nu/kg</b>	<b>Packing unit</b>
1	Maize-Yangtsepa/Shaphangma/Chaskarpa	30	10 kg/bag
2	Maize-P3377/P3302/P3502	267	2 kg/bag
3	Paddy-BRK-1&2/BK-1&2	40	20 kg/bag
4	Paddy-Bajo Maap-1&2	50	20 kg/bag
5	Paddy-Bajo Kaap-1&2/IR-64/IR-20913	45	20 kg/bag
6	Paddy-No.11/Chhumro/YRK-1&2/YRM-1&2	71	20 kg/bag
7	Wheat (Bumthang kaa-60/Gumasokhaka & Bajosokhaka)	38	20 kg/bag
8	Millet (Local)	28	20 kg/bag
9	Buckwheat (Sweet/Bitter)	54	20 kg/bag
10	Dhaincha	61	20 kg/bag
<b>H</b>	<b>Fertilisers</b>	<b>Nu/bag</b>	<b>Packing unit</b>
1	Urea (46% N )	885	45 kg/bag
3	Urea (46% N )	218	10 kg/bag
5	Suphala (NPK 15:15:15)	1876	50 kg/bag
6	Suphala (NPK 15:15:15)	775	20 kg/bag
9	SSP (16% P2O)	977	50 kg/bag
10	MOP (60% K2O)	2132	50 kg/bag
11	Borax (20% Boron minimum)	938	5 kg/bag
12	Bone Meal	2065	50 kg/bag

**Note:** Please note that prices quoted are subjected to change from time to time based on the prevailing purchase price, degree of difficulty in the production, procurement and processing of the seeds and related inputs.

## A. Field Crops varieties in Bhutan

Variety	Variety/breeding line name/original	Year of Release	VRCs	Releasing Agency	Yield Potential (t/ac)	Maturity (days after sowing)	Recommended agro-ecology (masl)	Remarks
<b>1. RICE</b>								
IR 64	IR 64	1988	1st	ARDC-Bajo	2.0-3.2	140-155	600-1500	Released
No 11	No 11	1988	1st	ARDC-Bajo	1.6-1.4	160	>1500	Released
BR 153	BR 153	1988	1st	ARDC-Bajo	1.2-1.6	140-150	<600	Released
IR 20913	IR 20913-B-26-1-2-2-3	1989	2nd	ARDC-Bajo	1.6-2.4	130-140	600-1500	Released
Khangma Maap	Chummro	1999	8th	ARDC-Wengkhar	1.6-2.4	120-130	>1500	Released
Bajo Maap 1	CARD21-10-1-1-3-2-1	1999	8th	ARDC-Bajo	2.0-3.2	150-155	600-1500	Released
Bajo Maap 2	CARD21-14-1-1-3-2-1B	1999	8th	ARDC-Bajo	2.0-3.0	145-155	600-1500	Released
Bajo Kaap 1	IR61331-2-148-B	1999	8th	ARDC-Bajo	2.0-3.4	145-155	600-1500	Released
Bajo Kaap 2	IR61328-1-136-2-1-2-3	1999	8th	ARDC-Bajo	2.0-3.4	150-165	600-1500	Released
Khangma Ray Kaap 2	Khumal-2	2002	9th	ARDC-Wengkhar	2.0-3.0	160-165	600-1500	Released
Yusi Ray Maap	Suweon 359/ IR41996-118-2-13/ Thimphu Maap	2002	9th	NCOA-Yusipang	2.5-3.5	140-160	>1800	Released
Yusi Ray Kaap	YR3825-11-3-2-1/ YR3825-11-3-2-1/ Barkat	2002	9th	NCOA-Yusipang	2.5-3.5	140-160	>1800	Released
Wengkhar Ray Kaap 6	Khumal -6	2006	11th	ARDC-Wengkhar	2.0-3.0	160-165	600-1500	Released
Jakar Ray Naap	Paro china	2006	11th	RDC-Jakar	1.5-2.0	140-160	>2600	Released
Yusi Raykaap 2	YP5-34-16 Akiyutaka/Naam	2010	13th	NCOA-Yusipang	2.0-4.0	132	> 1800	Released
Yusi Raymaap 2	YP6-35-21 Akiyutaka/Rey Maap	2010	13th	NCOA-Yusipang	2.0-3.0	134	>1800	Released
Wengkhar Raykaap 10	OR 367-SP 11	2010	13th	ARDC-Wengkhar	1.0-2.0	130-140	<700	Released
Bhur Raykaap 1	IR 72102-3-115-1-3-2	2010	13th	ARDC-Samtenling	2.0-3.0	155-160	<700	Released
Bhur Raykaap 2	KARJAT -3	2010	13th	ARDC-Samtenling	1.0-2.0	135-140	<700	Released
Bhur Kambja 1	APO	2010	13th	ARDC-Samtenling	1.0-1.5	125-130	<700	Released
Bhur Kambja 2	IR 70181-5-PM1-1-2-B-1	2010	13th	ARDC-Samtenling	1.0-1.5	140-145	<700	Released
Wengkhar Kambja 1	Machapuchra y-3	2017	19th	ARDC-Wengkhar	1.0-3.0	180	1500-2000	Released
Wengkhar Kambja 2	Zangthi -2	2017	19th	ARDC-Wengkhar	1.0-2.0	175	1500-2000	Released
<b>2. MAIZE</b>								
Yangtsipa	Suwon 1	1992	5th	ARDC-Wengkhar	1.2-1.6	120-130	<1800	Released
Chaskarpa	SO3TLYQAB05 (Entry 35)	2012	15th	ARDC-Wengkhar	2.75	170-180	1200-1800	Released
Shaphangma	ICA V 305 (Entry No 38)	2012	15th	ARDC-Wengkhar	2.81	180-185	>1800	Released
Bhur Ashom 1	Arun 4	2015	18th	ARDC-Samtenling	1.30	90-100	<1200	Released

Variety	Variety/breeding line name/original	Year of Release	VRCs	Releasing Agency	Yield Potential (t/ac)	Maturity (days after sowing)	Recommended agro-ecology (masl)	Remarks
<b>3. WHEAT</b>								
Gumasokha Ka	Agrim	2014	17th	ARDC-Bajo	1.2-1.3	150-160	1400	Released
Bajosokha Kaa	Baj	2014	17th	ARDC-Bajo	1.3-1.4	155-160	1400	Released
Bumthang Kaa Drukchu	NL 1064	2015	18th	RDC-Jakar	1.2-1.3	250	1200-2600	Released
<b>4. FINGER MILLET</b>								
Limithang Kongpu-1	3459	2002	9th	ARDC-Wengkharr	0.7-0.8	120	300-1700	Released
Limithang Kongpu-2	5459	2002	9th	ARDC-Wengkharr	0.84-0.85	140	300-1700	Released
<b>5. MUNGBEAN</b>								
Limithang Mung 1	KPS 2	2002	9th	ARDC-Wengkharr	0.30	120-130	800-1200	Released
Limithang Mung 2	Bari Mung 2	2002	9th	ARDC-Wengkharr	0.30	120-131	800-1200	Released
<b>6. MUSTARD</b>								
M-27	M-27	1989	2nd	ARDC-Bajo	0.40	85-90	<2000	Released
Bajo Peka 1	BSA	1994	7th	ARDC-Bajo	0.50	145-155	<2001	Released
Bajo Peka 2	PT 30	1994	7th	ARDC-Bajo	0.40	120-130	<2002	Released
Yusi Peka 1	Lumle Toria 1	2017	19th	NCOA-Yusipang	0.57	95-100	1500-2600	Released
Yusi peka 2	Bari Sharisha 15	2017	19th	NCOA-Yusipang	0.53	90-95	300-1400	Released
<b>7. SOYBEAN</b>								
One Daughter	One Daughter	1994	7th	NSC	0.8-1.0	150-160	600-2000	Released
Khangma Libi 2	GC 86018-427-3	2002	9th	ARDC-Wengkharr	0.5-1.0	150-160	800-1500	Released
Brag	Brag	2002	9th	NSC	1.0-2.0	145-160	600-2000	Notified
Khangma Libi-1	AGS 258	1999	8th	ARDC-Wengkharr	1.0-1.5	154-164	600-2000	Released

## B. FRUITS

Variety	Variety/breeding line name/original	Year of Release	VRCs	Releasing Agency	Yield Potential (t/ac)	Maturity (days after sowing)	Recommended agro-ecology (masl)	Remarks
<b>1. ARECA-NUT</b>								
Bhur selection	Bhur Selection	2004	10th	NSC	3.0-5.0	Dec-March	<1000	Released
<b>2. ALMONDS</b>								
Texas	Texas	2004	10th	ARDC-Bajo	0.12 kg/tree	Mid August	1300-2000	Released
Drake	Drake	2004	10th	ARDC-Bajo	0.45 kg/tree	August-September	1300-2000	Released
Dhebhar Badhan	Dhebhar Badhan	2004	10th	ARDC-Bajo	2.5 kg/tree	August-September	1300-2000	Released
Kagzi	Kagzi	2004	10th	ARDC-Bajo	1.6 kg/tree	Mid August	1300-2000	Released

Variety	Variety/breeding line name/original	Year of Release	VRCs	Releasing Agency	Yield Potential (t/ac)	Maturity (days after sowing)	Recommended agro-ecology (masl)	Remarks
<b>3. APPLE</b>								
Red Delicious	Red Delicious	1994	7th	NCOA-Yusipang	7.00	Sept-October	2000-2800	Released
Royal Delicious	Royal Delicious	1994	7th	NCOA-Yusipang	7.00	Sept-October	2001-2800	Released
Golden Delicious	Golden Delicious	1994	7th	NCOA-Yusipang	3.70	Sept-October	2002-2800	Released
Jonathan	Jonathan	1994	7th	NCOA-Yusipang	5.00	October	2003-2800	Released
Rich Red	Rich Red	1994	7th	NH-RDC-Jakar	3.50	August-September	2004-2800	Released
Lobo	Lobo	2002	9th	NH-RDC-Jakar	3.20	Late September	2005-2800	Released
Red Chief	Red chief	2004	10th	NCOA-Yusipang	2.0-3.0	Sept-October	2000-2500	Released
Red Free	Red Free	2004	10th	NCOA-Yusipang	3.80	Mid August	2000-2500	Released
Bajo Apple	Anna	2002	9th	ARDC-Bajo	2.50	Mid July	1000-1500	Released
Fuji	Fuji	2007	12th	NSC	5.0-7.0	October	2000-2500	Released
Mutsu	Mutsu	2007	12th	NSC	5.0-7.0	Early October	2000-2500	Released
<b>Apple Root Stock</b>								
MM9	MM9	2006	11th	NSC	Root-stock	Rootstock	>2000	Released
MM 11	MM 11	2006	11th	NSC	Root-stock	Rootstock	>1200	Released
MM - 106	MM-106	1994	7th	NCOA-Yusipang	Root-stock	Rootstock	>2000	Released
<b>4. APRICOT</b>								
Bajo Khamchung 1	Newcastle	2002	9th	ARDC-Bajo	2.5-4.8	Mid May	1200-2000	Released
Shakapara	Shakapara	2002	9th	NSC	3.0-4.0	May	<1800	Released
Bajokham-2	July Elberta	2004	10th	ARDC-Bajo	3.0-4.0	July	1200-2500	Released
<b>5. AVOCADO</b>								
Bajo-Gule-1	Bacon	2012	15th	ARDC-Bajo	125 kg/tree	March-December	300-1500	Released
Bajo-Gule-2	Haas	2012	15th	ARDC-Bajo	53 kg/tree	March-February	300-1500	Released
<b>6. BANANA</b>								
Jaji	Jaji	2002	9th	NSC	5.0-7.0	Sept-April	<1500	Released
Gheukola	Gheukola	2002	9th	NSC	5.0-7.0	Sept-April	<1500	Released
Chinichampa	Chinichampa	2002	9th	NSC	3.0-5.0	Sept-April	<1500	Released
<b>7. CARDAMOM</b>								
Bharlangey	Bharlangey	2002	9th	NH-RDC-Jakar	0.25-0.35	Sept-October	900-1600	Released
Golsey	Golsey	2002	9th	NH-RDC-Jakar	0.25-0.35	August-September	900-1200	Released



Variety	Variety/breeding line name/original	Year of Release	VRCs	Releasing Agency	Yield Potential (t/ae)	Maturity (days after sowing)	Recommended agro-ecology (masl)	Remarks
<b>8. CHERRY</b>								
Seneca	Seneca	2002	9th	NSC	0.9-1.0	Early May	1600-2600	Released
Royal Ann	Royal Ann	2002	9th	NSC	0.9-1.0	Early May	1600-2600	Released
Jabouney	Jabouney	2002	9th	NSC	1.0-1.72	June	1600-2600	Released
Seokham Drukchu	Stella	2015	18th	NCOA-Yusipang	1.0-1.02	July	1600-2600	Released
<b>9. DRAGON FRUIT</b>								
Gewaringpa 1	Hylocereus undatus	2017	19th	ARDC-Wengkharr	20 kg/tree	37-46 DAS	300-1500	Released
<b>10. GOOSE BERRY</b>								
Bajo Amla	Chakiya	2010	13th	ARDC-Bajo	NA	October	400-1500	Notified
<b>11. GRAPES</b>								
Muscate of Alexandria	Muscate of Alexandria	2004	10th	ARDC-Bajo	3.00	August	500-1800	Released
Perlette	Perlette	2004	10th	ARDC-Bajo	1.00	June	500-1800	Released
<b>12. GUAVA</b>								
Bebsew Shakha	Pink Flesh	2010	13th	ARDC-Bajo	15-20 kg/tree	May-October	250 - 1300	Released
Bajo-Bebsew	Local	2010	13th	ARDC-Bajo	10-15 kg/tree	May-October	250 - 1300	Released
<b>13. KIWI</b>								
Zhimpeykatong Sep	Yellow Joy	2015	18th	ARDC-Wengkharr	4.0-6.0	October	1200-2300	Released
Zhimpeykatong Jangkha	Wengkharr Green	2015	18th	ARDC-Wengkharr	4.0-6.0	Oct-November	1200-2300	Released
Zhimpeykatong Phosing	Hayward	2015	18th	ARDC-Wengkharr	Male plant	Male plant	1200-2300	Released
<b>14. LIME</b>								
Bears	Swingle	2004	10th	ARDC-Bajo	1.0-2.0	Aug-January	500-1500	Released
<b>15. LITCHI</b>								
Bhur Selection-1	Bhur Selection-1	2004	10th	NSC	9.0-10.0	June-July	<1200	Released
Shahi	Shahi	2006	11th	NSC	10.0-12.0	Late June	<1200	Released
Early Bedana	Early Bedana	2006	11th	NSC	8.0-9.0	Early June	<1200	Released
Bhur Litchi 1	Muzaffarpur	2012	15th	ARDC-Santenling	70 kg/tree	February-May	200-700	Released
Bhur Litchi 2	Bedana	2012	15th	ARDC-Santenling	65 kg/tree	February-May	200-700	Released
<b>16. MANDARIN/ORANGE</b>								
Dorokha Selection	Dorokha Selection	2004	10th	NSC	4.0-5.0	Oct-December	700-1700	Notified
Wengkharr Tshelu 1	Wengkharr Tshelu 1	2007	12th	ARDC-Wengkharr	35 kg/tree	Mid November	1300-1700	Released
Wengkharr Tshelu 2	Wengkharr Tshelu 2	2007	12th	ARDC-Wengkharr	27 kg/tree	Mid November	1300-1700	Released

Variety	Variety/breeding line name/original	Year of Release	VRCs	Releasing Agency	Yield Potential (t/ae)	Maturity (days after sowing)	Recommended agro-ecology (masl)	Remarks
Wengkhhar Tselu Drukchu	Clemintina Nules	2015	18th	ARDC-Wengkhhar	37 kg/tree	December	1200-1500	Released
Wengkhhar Tshelu Ngarm	Tarku	2015	18th	ARDC-Wengkhhar	41 kg/tree	January	800-1300	Released
<b>Mandarin Rootstock</b>								
Rangpur Lime	Rangpur Lime	2004	10th	ARDC-Wengkhhar	Root-stock	Rootstock	800-1200	Released
Wengkhhar Tshelurhato1	Trifoliolate Orange	2006	11th	ARDC-Wengkhhar	Root-stock	Rootstock	800-1600	Released
Carrizo citrange	Carrizo citrange	2006	11th	NSC	Root-stock	Rootstock	800-1800	Released
Troyer citranze	Troyer citranze	2006	11th	NSC	Root-stock	Rootstock	800-1800	Released
Cleopatra mandarin	Cleopatra Mandarin	2006	11th	NSC	Root-stock	Rootstock	800-1800	Released
<b>17. MANGO</b>								
Chausa	Chausa	2002	9th	NSC	4.0-6.0	August	<1500	Released
Bajo-Aumchukali-1	Dashahari	2010	13th	ARDC-Bajo	12-15 kg/tree	Mid March-August	280-800	Released
Bajo-Aumchukali-2	Langra	2010	13th	ARDC-Bajo	12-15 kg/tree	Mid March-August	250-800	Released
Bajo-Aumchukali-3	Amrapalli	2010	13th	ARDC-Bajo	12-15 kg/tree	March-September	250-800	Released
<b>18. MUSK MELON</b>								
Honey Dew	Honey Dew	1990	3rd	ARDC-Bajo	2.0-4.0	90-110 DAS	600-1500	Released
<b>19. PASSION FRUIT</b>								
Local	Local	2004	10th	NSC	1.0-2.0	May-June	<1500	Released
<b>20. PEACH</b>								
Bajokham 1	Flordasum	2002	9th	ARDC-Bajo	3.0-4.0	Mid May	1000-2000	Released
Nonomiwase	Nonomiwase	2002	9th	NSC	5.9-8.0	June-July	>1500	Released
Bajokham 2	July Elberta	2004	10th	ARDC-Bajo	2.9-3.7	July	1200-2500	Released
Bathpala Super	Bathpala Super	2004	10th	NH-RDC-Jakar	4.0-6.0	July-August	2000-2600	Released
<b>21. PEAR</b>								
Hosui	Hosui	2002	9th	NSC	6.0-7.0	Mid August	1500-2200	Released
Kosui	Kosui	2002	9th	NSC	5.0-6.0	July-Early August	1500-2000	Released
Bajo Lhee 1	Flemish Beauty	2004	10th	ARDC-Bajo	2.0-3.0	August	1300-2500	Released
Zhey Lhee	Zhey Lhee	2004	10th	NH-RDC-Jakar	4.8-5.5	Early October	<2000	Notified
Wengkhharleae-1	Chojuro	2010	13th	ARDC-Wengkhhar	10.00	August	1500 to 2200	Released

Variety	Variety/breeding line name/original	Year of Release	VRCs	Releasing Agency	Yield Potential (t/ae)	Maturity (days after sowing)	Recommended agro-ecology (masl)	Remarks
Wengkharsee-2	Shinko	2012	15th	ARDC-Wengkharsee	59 kg/tree	August end	1500 to 2200	Released
<b>22. PERSIMMON</b>								
Fuyu	Fuyu	2004	10th	NSC	3.0-4.0	Mid November	1000-1650	Released
Jiro	Jiro	2004	10th	NSC	3.0-4.0	Early October	1000-1650	Released
Wengkharsee Anday 1	Wengkharsee Anday 1	2007	12th	ARDC-Wengkharsee	2.0-3.0	Mid September	1500-2300	Released
<b>23. PLUM</b>								
Santa Rosa	Santa Rosa	2002	9th	NSC	3.0-5.0	May-June	>1700	Released
Oishiwase	Oishiwase	2002	9th	NSC	5.0-6.0	May-June	>1700	Released
Jambay Lhakhang Chuli	Jambay Lhakhang Chuli	2004	10th	NH-RDC-Jakar	4.0-5.0	July-August	2000-2600	Released
Soldum	Soldum	2012	15th	ARDC-Wengkharsee	45 kg/tree	Last week of June	1600-2500	Released
<b>24. POMEGRANATE</b>								
Bedana	Bedana	2004	10th	NSC	2.5-4.0	Late August	<1500	Released
Bajoseindu-1	Khandari	2010	13th	ARDC-Bajo	26.7 kg/tree	April-August	400-1500	Released
<b>25. STRAW BERRY</b>								
Yusi Sagong 1	Chandler	2006	11th	NCOA-Yusipang	0.7	May-June	1500-2500	Released
Pangtshalu Ngam	Sweet Charlie	2014	17th	NCOA-Yusipang	1.37	May	1800-2600	Released
Pangtshalu Maap	Camarosa	2014	17th	NCOA-Yusipang	0.63	June	1800-2600	Released
<b>26. WALNUT</b>								
Kagzi	Kagzi	2002	9th	NSC	0.5-1.5	Mid September	1400-2800	Released
Kantheel	Kantheel	2004	10th	NCOA-Yusipang	1.0-1.5	September	1400-2800	Released
Yusipang 2	Yusipang 2	2004	10th	NCOA-Yusipang	0.5-1.0	September	1400-2800	Released
<b>27. WATER MELON</b>								
Asahi Yamato	Asahi Yamato	1990	3rd	ARDC-Bajo	8.0-10.0	July-August	600-1500	Released

## C. VEGETABLES

Variety	Variety/breeding line name/original	Year of Release	VRCs	Releasing Agency	Yield Potential (t/ae)	Maturity (days after sowing)	Recommended agro-ecology (masl)	Remarks
<b>1. ASPARAGUS</b>								
Merry Washington	Merry Washington	2002	9th	NSC	1.1-1.5	3 years	1000-2500	
UC-157	UC-157 (Hybrid)	2006	11th	NSC	1.0-2.0	2-3 yrs	1000-2600	

Variety	Variety/breeding line name/original	Year of Release	VRCs	Releasing Agency	Yield Potential (t/ae)	Maturity (days after sowing)	Recommended agro-ecology (masl)	Remarks
<b>2. BEANS</b>								
Borloto	Borloto	1990	3rd	ARDC-Bajo	2.0-4.0	65-70	<1500	
Pusa Parvati	Pusa Parvati	1990	3rd	ARDC-Bajo	2.5-3.5	50-60	<1500	
Top Crop	Top Crop	1990	3rd	ARDC-Bajo	1.0-2.0	70-85	<1500	
Rasma	Rasma	1994	7th	ARDC-Bajo	2.50	80-90	700-2000	
Green Arrow	Green Arrow	1999	8th	ARDC-Bajo	2.00	60	700-2000	
Lingmethang Mung 1	KPS2	2002	9th	ARDC-Wengkhhar	0.30	120-130	800-1200	
Lingmethang Mung 2	Barimung	2002	9th	ARDC-Wengkhhar	0.30	120-130	800-1200	
White No 1	White No 1	2004	10th	ARDC-Bajo	1.5-2.5	70-80	700-1500	
Selection 9	Selection 9	2004	10th	ARDC-Bajo	1.5-3.0	70-80	<2200	
<b>3. BEET ROOT</b>								
DDR	DDR	2004	10th	NSC	4.0-5.0	70-80	<2500	
<b>4. BOTTLE GOURD</b>								
Mindapur Round	Mindapur Round	1999	8th	ARDC-Bajo	6.0-7.0	85-95	<1500	
<b>5. BRINJAL</b>								
Paro Local	Paro Local	1990	3rd	NASEPP	1.0-2.0	90-100	<2600	
Big Round	Big Round	1990	3rd	NASEPP	2.0-4.0	75-90	600-1500	
Pusa Purple Long	Pusa Purple Long	1990	3rd	ARDC-Bajo	2.0-3.0	90-110	600-1500	
<b>6. BROCCOLI</b>								
Desico/Deccico	Desico	1994	7th	ARDC-Bajo	0.8-1.0	100-110	600-2600	
<b>7. BULB ONION</b>								
Senshu Red	Senshu Red	1994	7th	NASEPP	7.00	120-170	<2600	
White Creole	White Creole	2002	9th	NSC	5.0-7.0	120-160	<2600	
Bombay Red	Bombay Red	2002	9th	NSC	4.0-6.0	110-160	<2200	
Red Creole	Bajogop 1	2002	9th	ARDC-Bajo	7.0-8.0	120-140	<2200	
<b>8. BUNCHING ONION</b>								
No 21	No 21	2002	9th	NSC	1.0-3.0	80-90	<2600	
No 22	No 22	2002	9th	NSC	1.0-3.0	80-90	<2600	
<b>9. CABBAGE</b>								
Copenhagen Market	Copenhagen Market	1990	3rd	ARDC-Bajo	9.0-10.0	75-85	<2600	
Golden Acre	Golden Acre	1990	3rd	ARDC-Bajo	9.0-10.0	75-85	<2600	
Green Coronate	Green Coronate (Hybrid)	2006	11th	NSC	12.0-13.0	80-90	Across all AEZ	
Gianty	Gianty (Hybrid)	2006	11th	NSC	11.0-12.0	70-80	Across all AEZ	
T1-163	T1-163 (Hybrid)	2006	11th	NSC	10.0-11.0	65-75	Across all AEZ	
Bonday Cross	Bonday Cross (Hybrid)	2006	11th	NSC	10.0-11.0	90-110	Across all AEZ	

Variety	Variety/breeding line name/original	Year of Release	VRCs	Releasing Agency	Yield Potential (t/ac)	Maturity (days after sowing)	Recommended agro-ecology (masl)	Remarks
Lucky Ball	Lucky Ball	2007	12th	NSC	9.0-10.0	80-100	Across all AEZ	
<b>10. CAPSICUM</b>								
10.1. California Wonder	California Wonder	1990	3rd	ARDC-Bajo	4.0-5.0	75-80	700-2000	
<b>11. CHILLI</b>								
Sha Ema	Sha Ema	1990	3rd	NSC	15.0-20.0	90-100	1000-2000	
Super Solo	Super solo	2004	10th	ARDC-Wengkharr	19.00	90-100	700 to 2500	
Yangtse Ayema	Yangtse ayema	2007	12th	ARDC-Wengkharr	4.0-6.0	90-100	1000-2000	
<b>12. CARROT</b>								
Early Nantes	Early Nantes	1990	3rd	ARDC-Bajo	4.0-6.0	80-90	600-2600	
Nisa	Nisa	2002	9th	NSC	4.0-6.0	90-100	<2000	
Wengkharr Lhaphu Maap	Khurada 5	2006	11th	ARDC-Wengkharr	14.00	105	600 to 2500	
New Khuruda	New Khuruda	2006	11th	NSC	8.0-9.0	100-110	<2000	
All Seasons Cross	All Seasons Cross (Hybrid)	2006	11th	NSC	8.9-10.0	110-120	<2200	
<b>13. CAULIFLOWER</b>								
White Top	White Top	1990	3rd	ARDC-Bajo	10.0-15.0	100	1000-2600	
White Summer	White Summer	1990	3rd	ARDC-Bajo	10.0-12.0	90-100	1500-2000	
Wengkharr Early	Wengkharr Metokopi 1	2004	10th	ARDC-Wengkharr	7.0-8.0	90	600-2500	
Wengkharr Late	Wengkharr Metokopi 2	2004	10th	ARDC-Wengkharr	10.0-12.0	120	600-2500	
<b>14. CELERY</b>								
Cornel	Cornel	2002	9th	NSC	5.0-6.0	120-160	<2600	
<b>15. CHINESE CABBAGE</b>								
Kyoto 1	Kyoto 1	1990	3rd	ARDC-Bajo	12.0-16.0	60-85	1500-2200	
<b>16. CUCUMBER</b>								
Shabigenchu	Shabigenchu	1990	3rd	NASEPP	1.2-2.0	70-100	<2400	
Bajogenchu-1	Bajogenchu-1	1999	3rd	ARDC-Bajo	2.0-4.0	70-85	<2000	
<b>17. GARLIC</b>								
Local Selection	Local Selection	1990	3rd	NASEPP	4.0-6.0	230-250	<2000	
<b>18. JAPANESE GREEN</b>								
Taisai	Taisai	1990	3rd	NASEPP/NSC	3.0-4.0	40-50	<2600	
Mibuna	Mibuna	1990	3rd	NASEPP/NSC	3.0-4.0	40-50	<2600	
<b>19. LADIES FINGER</b>								
Kranti	Kranti	2002	9th	NSC	3.0-5.0	70-80	600-1500	

Variety	Variety/breeding line name/original	Year of Release	VRCs	Releasing Agency	Yield Potential (t/ae)	Maturity (days after sowing)	Recommended agro-ecology (masl)	Remarks
<b>20. LETTUCE</b>								
Great Lake	Great Lake	1990	3rd	NASEPP	3.0-4.0	70-80	<2600	
Hogaypetshey Leedo	Biscia Rosa	2014	17th	NCOA-Yusipang	11.84	90-100	Temperate	
Hogaypetshey Thigthra	Flashy Trout	2014	17th	NCOA-Yusipang	14.8	90-100	Temperate	
Hogaypetshey Hyme	Green Oak Leaf	2014	17th	NCOA-Yusipang	7.20	90-100	Temperate	
Hogaypetshey Oro	Blush Butter Oak	2014	17th	NCOA-Yusipang	6.80	90-100	Temperate	
<b>21. MUSTARD GREEN</b>								
Him Beauty	Him Beauty	1990	3rd	NASEPP/NSC	2.5-4.0	50-60	1200-2600	
Takana Red	Takana Red	1990	3rd	NASEPP/NSC	2.0-3.0	50-60	1200-2600	
Taisai	Taisai	1990	3rd	NASEPP	2.0-3.0	60-70	1500-2600	
Neguna	Neguna	1990	3rd	NASEPP	2.0-3.5	60-70	1200-2600	
Wengkhar Peytse 1	Wengkhar Peytse 1	2004	10th	-	3.5-4.0	100-120	600-2600	
Wengkhar Peytse 2	Wengkhar Peytse 2	2004	10th	ARDC-Wengkhar	3.5-4.0	100-120	600-2600	
<b>22. PARSLEY</b>								
Paramount	Paramount	1990	3rd	NASEPP	2.5-3.5	130-160	<2200	
<b>23. PEA</b>								
Arkel	Arkel	2002	9th	NSC	1.0-2.0	65-75	All AEZ	
Usui	Usui	2002	9th	NSC	2.0-3.0	90-100	>1800	
<b>24. POTATO</b>								
Desiree	CIP 800048	1988	1st	BNPP/ NCOA-Yusipang	15.0- 18.0	90	1000-2000	
Khangma Kewa Kaap	CIP 378015.13	2002	9th	ARDC-Wengkhar	16.0- 20.0	100-105	600-2500	
Nasephey Kewa Kaap	CIP-393077.159	2014	17th	National Potato Program	39-45	160-180	Across all AEZ	
Yusi Maap	CIP 392797.22	2017	19th	National Potato Program	11.6- 17.2	120-140	Mid-High Altitude	
<b>25. PUMPKIN</b>								
Ramthang Brumsha	Ramthang Brumsha	1990	3rd	NASEPP	2.0-4.0	100-140	<1200	
Tetsu Kabuta	Tetsu Kabuta	1990	3rd	NASEPP	2.0-3.0	90-100	<1500	
Summer Squash	Summer Squash	1994	7th	NASEPP	1.0-2.0	90-100	<2400	
Wengkhar Kakur	Wengkhar kakur	2007	12th	ARDC-Wengkhar	1.0-2.0	90-100	<1700	
<b>26. RADISH</b>								
Minowase	Spring Toknashi	1990	3rd	NASEPP	8.0-10.0	50-80	<2600	
Malaysige	Minowase	1990	3rd	NASEPP	9.0-10.0	50-60	<2000	
Bajo Laphu 1	Hongkong White	2002	9th	ARDC-Bajo	12.0- 20.0	45	<1500	
<b>27. SPINACH</b>								
All Green	All Green	1990	3rd	ARDC-Bajo	4.0-10.0	50 -60	<1500	
Leaf Beet	Leaf Beet	2002	9th	NSC	4.0-10.0	50-70	<1800	

Variety	Variety/breeding line name/original	Year of Release	VRCs	Releasing Agency	Yield Potential (t/ac)	Maturity (days after sowing)	Recommended agro-ecology (masl)	Remarks
<b>28. SUMMER SQUASH</b>								
Zucchini	Zucchini -Green	1994	7th	NASEPP				
<b>29. TOMATO</b>								
Roma	Roma	1990	3rd	ARDC-Bajo	4.0-6.0	90-150	<1500	
Nozomi	Nozomi	1990	3rd	ARDC-Bajo	4.5-6.0	90-100	1000-2200	
Cherry Tomato	CHT160	1999	3rd	ARDC-Bajo	8.0-12.0	60-70	1300-1800	
Bajo Lambenda 1	Rattan	2002	9th	ARDC-Bajo	8-12.0	80-100	300-2600	
<b>30. TURNIP</b>								
PTWG	PTWG	1990	3rd	NASEPP	8.0-12.0	70-90	>1000	
Local Purple	PTWG	1990	3rd	NASEPP	8.0-12.0	60-70	>1000	

## De-notified varieties

Sl. No.	Crop	Variety	Proposing Agency	Released Year	De-notified year
<b>A Cereals</b>					
1	Rice	Milyang 54	ARDC-Bajo	1989	2002
		Barket	ARDC-Bajo	1892	2002
		BW 293	ARDC-Bajo	1990	2010
2	Mustard	T-9	ARDC-Bajo	1989	2002
		Sonalika	ARDC-Bajo	1970	2014
3	Wheat	Bajoka 1	ARDC-Bajo	1991	2015
		Bajoka 2	ARDC-Bajo	1994	2015
		Khangma Ashom 1	ARDC-Wengkhhar	1999	2015
4	Maize	Khangma Ashom 2	ARDC-Wengkhhar	1999	2015
<b>B Vegetables</b>					
1	Beans	Brothbone	NSC	1990	2002
		Kentucky Wonder	NSC	1990	2002
		Long John	ARDC-Bajo	1994	2002
2	Bulb Onion	Senshu Yellow	NSC	1990	2002
		Nasik Red	NSC	1994	2002
3	Cabbage	Baldura	ARDC-Bajo	1990	2002
		Pride of India	ARDC-Bajo	1990	2002
4	Carrot	Chantaney Improved	NSC	1990	2002
		Snow Ball -16	NSC	1994	2002
5	Cauliflower	Progress	NSC	1994	2002
		19907	NSC	2002	2004

6	Celery	Short Lake	NSC	1990	2002
7	Chilli	Hot Wax	ARDC-Bajo	1990	2002
8	Cucumber	Shanton No 1	NSC	1990	2002
9	Ladies finger	Blue Bell	ARDC-Bajo	1994	2002
		Pusa Sawani	ARDC-Bajo	1994	2002
10	Lettuce	Sunny	NSC	1994	2002
11	Pea	Snow Pea	ARDC-Bajo	1990	2002
		JI 1050	ARDC-Bajo	1990	2002
12	Potato	Kufri Jyoti	NCOA-Yusipang	1988	2014
		Yusikaap	NCOA-Yusipang	1988	2014
13	Pumpkin	Utsuki red	NSC	1990	2002
14	Radish	Mihaysiga	NSC	1990	2002
		Shogum	NSC	1990	2002
15	Tomato	Fusa 3	NSC	1990	2002
		Helfrush	NSC	1990	2002
16	Watermelon	16.1. Asahi Yamato	NSC	1990	2002
17	Welsh Onion	17.1. Kujo	NSC	1990	2002

**Source: Department of Agriculture**



## Price of Pesticides

Sl. No.	Pesticide type	Pack size	Unit	Rate in Nu. (Pack size)
<b>1</b>	<b>INSECTICIDES</b>			
1	Chlproprifos 20 EC	100 ml	Lt	38
2	Cypermethrin 10 EC	100 ml		32
3	Fenvelerate 0.4 D	1 kg	Kg	47
4	Imidacloprid 20 SL	100 ml	Lt	92
5	Malathion 50 EC	100 ml		55
<b>2</b>	<b>FUNGICIDES</b>			
1	Captan 50 WP	250 gm	Kg	113
2	Carbendazim 50 WP	250 gm		108
3	Copper Oxychloride 50 WP	100 gm		42
4	Copper Sulphate	500 gm	Gm	162
5	Hexaconazole 5 EC			36
6	Mancozeb 75 WP	250 gm	Kg	66
7	Metallyxyl + Mancozeb (8% + 64%)	100 gm		49
8	Tricyclazole 75 WP	250 gm		116
9	Sulphur 80 WP	250 gm		42
<b>3</b>	<b>HERBICIDES</b>			
1	Butachlor 5G	Kg	Kg	41
2	Glyphosate 41 SL	500 ml	Lt	134
3	Metribuzin 70 WP	250 gm	Kg	568
4	Ethoxysulfuron (Sunrice)	50 gm	Kg	481
<b>4</b>	<b>RODENTICIDES</b>			
1	Zinc phosphide 80 W/W	10 gm	Kg	13
<b>5</b>	<b>NON-TOXIC</b>			
1	HMO/TSO (Tree spray oil)		Lt	165
2	Sticker/Activator/Spreader			270
3	Protein Hydrolysate		Kg	333
<b>6</b>	<b>BIO-PESTICIDES</b>			
1	Azadirachtin 0.3% (Neem oil) (10000PPm/15000PPm)	No		56
2	Trichoderma viride	Kg		171
3	Yellow Light Trap	Pkt		1079
4	Chilli Pod Borer Lure			250
5	Coco Trap			300
6	McPhail Trap	No		
7	Fero-T R Trap (Funnel trap)			250
8	Rice ear-cutting caterpillar lure			

Sl. No.	Pesticide type	Pack size	Unit	Rate in Nu. (Pack size)
9	Red palm weevil lure			
10	Fall armyworm lure		No	250
11	Mango fruit fly lure			

**Source: National Plant Protection Centre**

## Price list of agriculture machinery equipment

Sl. No.	Item	Price in Nu.
1	Mitsubishi Mini Power tiller with complete accessories	261,105.67
2	Captain Tractor (28hp) with complete implements	956,000.00
3	Yanmar power tiller with complete set	459,990.00
4	Diesel engine type DM10-10hp (with accessories)	39,026.00
5	Diesel engine type TV-1 7hp (with accessories)	37,615.00
6	Rice Mill No.8 with complete accessories	12,450.00
7	Rice Mill No.4 with complete accessories	10,350.00
8	Floor Mill No.16 with complete accessories	12,500.00
9	Floor Mill No. 12 with complete accessories	10,400.00
10	Electric motor 7.5KW/10HP (with accessories)	22,728.66
11	Electric motor 5.5KW/7.5HP (with accessories)	20,468.66
12	Table Oil Expeller (Sardar)	43,700.00
13	Peanut Shelling machine with motor. Capacity 200 kg per hr	105,900.00
14	Corn Flake Machine	50,002.00
15	Mini Domestic Rice Mill	21,850.00
16	Mini Flour Mill (Box Type)	17,481.00
17	Flat Belting 3"x4 Ply (Std. 6mts)	360.00
18	Belt Fastener	15.00
19	Nursery Tray	109.00
20	Potato Chips Processing Machines (Complete Set)	119,000.00
21	Green House with insect protection net attached (20 x 5M)	55,200.00
22	Brush Cutter Machine. (Trolley Type)	16,000.00
23	Brush Cutter Machine. Backpack (Normal)	16,000.00
24	Vaccum Packaging machine (Model: DZ280A) Small	8,000.00
25	Chaff Cutter Machine (Indian)	28,175.00

### Terms & Conditions

1. Delivery up to the nearest motor road point is 100%.
2. Delivery against full payment.
3. Price will be change based on the tender and will be charged at the time of delivery.
4. The selling price is subjected to change of price by the supplier.

**NOTE:** For further details, please contact respective Regional Managers

**Source: Farm Machinery Corporation Limited**

## Feed and Fodder

Sl. No.	Variety	Year Release	Releasing Agency	Yield Potential (Dry Matter Yield, t/ac)	Maturity for grazing	Recommended Agro-Ecology (masl)
1	Fig	2001	NH-RDC-Jakar	3.0-3.5	2-3 yrs (Fodder tree)	300-2000
2	Kikiyu grass	2001	NH-RDC-Jakar	4.0-6.0	1 yr (Perennial)	1000-2300
3	Willow	2001	NH-RDC-Jakar	0.8-2.2	3 yr (Fodder tree)	1700-2800
4	Cocks foot, Var Amba	2002	NH-RDC-Jakar	0.8-1.2	1 yr (Perennial)	2000-3500
5	Fodder peanut	2002	NH-RDC-Jakar	1.1-2.0	1 yr (Perennial)	<1500
6	Italian Rye grass Var. Lipo	2002	NH-RDC-Jakar	1.2-2.2	1 yr (Perennial)	2000-3000
7	Lucerne Var. Eureka	2002	NH-RDC-Jakar	1.6-2.5	1 yr (Perennial)	1000-2800
8	Molasses grass	2002	NH-RDC-Jakar	1.6-2.4	1 yr (Perennial)	<2000
9	Napier grass	2002	NH-RDC-Jakar	4.0-6.0	1 yr (Perennial)	<2000
10	Oat (FOB)	2002	NH-RDC-Jakar	2.0-3.0	1 yr (Annual)	20-4000
11	Palisade Grass	2002	NH-RDC-Jakar	3.2-3.6	1 yr (Perennial)	<1500
12	Paspalum Atratum Var. CIAT 26986	2002	NH-RDC-Jakar	2.0-3	1 yr (Perennial)	<1500
13	Ruzi grass	2002	NH-RDC-Jakar	2.8-3.2	1 yr (Perennial)	500-2000
14	Stylo Var. CIAT 184	2002	NH-RDC-Jakar	4.0-12.0	1 yr (Perennial)	<1200
15	Sugarcane	2002	NH-RDC-Jakar	16.0-20.0	1 yr (Annual)	<1200
16	Swede Var. Ostega	2002	NH-RDC-Jakar	2.0-2.5	1 yr (Annual)	2500-2700
17	Tall Fescue Var. Barcel	2002	NH-RDC-Jakar	1.5-3.0	1 yr (Perennial)	2000-3500
18	White Clover Var. Ladino	2002	NH-RDC-Jakar	3.2-4.4	1 yr (Perennial)	1700-3300
19	Fodder Beet (Alba)	2004	NH-RDC-Jakar	1.5-3.0	1 yr (Annual)	2000-3500
20	Gautemala Grass	2004	NH-RDC-Jakar	1.2-2.4	1 yr (Annual)	<1500
21	Oat (Naked)	2004	NH-RDC-Jakar	2.0-3.0	1 yr (Annual)	200-4000
22	Oat (Sampede)	2004	NH-RDC-Jakar	2.2-4.0	1 yr (Annual)	200-4000
23	Gamba grass	2007	NH-RDC-Jakar	2.0-3.0	1 yr (Perennial)	<900
24	Guinea grass	2007	NH-RDC-Jakar	2.4-3.2	1 yr (Perennial)	>1000
25	Paspalum	2007	NH-RDC-Jakar	2.0-3.0	2 yr (Perennial)	500- 2300
26	Setaria	2007	NH-RDC-Jakar	2.8-3.6	1 yr (Perennial)	<2000
27	Setaria	2015	NH-RDC-Jakar	8.3 tons/ha	Perennial	300-1500
28	Hairy vetch	2015	NH-RDC-Jakar	4 tons/ha	Perennial	2000
29	Silver leaf desmodium	2015	NH-RDC-Jakar	5 tons/ha	Perennial	300-1000
30	Centro	2015	NH-RDC-Jakar	4 tons/ha	Perennial	< 900

## Prices of Livestock inputs

Sl. No.	Item	Unit	Nu.	Remarks
<b>1. Dairy Sector</b>				
1	Pure Jersey Bull		12,000	
2	Pure Jersey Heifer			As per body weight and fertility status
3	Jersey Cross Bull		8000	
4	Jersey Cross Heifer	Number		As per body weight and fertility status
5	Brown Swiss Cross Bull		12000	
6	Brown Swiss Cross Heifer			As per body weight and fertility status
7	Pure Mithun Bull		16000	
8	Nublang Bull		5000	
9	Locally produced semen		Dose	117
10	Imported semen (Conventional)	400		Average cost
11	Imported semen (Sex sorted)	1500		
12	Liquid Nitrogen	Litre	38	Nu. 38 is cost of production per litre. However, LN2 produced from NDRDC, Yusipang is supplied free to all AI centres
<b>2. Piggery Sector</b>				
1	Piglets (10-12 kgs)		2000	
2	Gilt (6-7 months)	Number	6000	Subsidised rate
3	Boar (6-7 months)		6000	
<b>3. Poultry Sector</b>				
1	Layer Day old Chick (DoC)		30	
2	Broiler Day old Chick (DoC)		25	
3	Imported Layer (DoC)	Number	65	Rate set by importers
4	Imported Broiler (DoC)		62	
<b>4. Fishery Sector</b>				
1	Common Carp (Ordinary fingerling)		0.5	
	Common Carp (Stunted fingerling)		1	
2	Grass Carp (Ordinary fingerling)	Number	0.5	
	Grass Carp (Stunted fingerling)		1	
3	Silver Carp (Ordinary fingerling)		0.25	
	Silver Carp (Stunted fingerling)		0.25	

Sl. No.	Item	Unit	Nu.	Remarks	
4	Rohu (Ordinary fingerling)	Number	0.5		
	Rohu (Stunted fingerling)		1		
5	Mrigal (Ordinary fingerling)		0.5		
	Mrigal (Stunted fingerling)		1		
6	Catla (Ordinary fingerling)		0.5		
	Catla (Stunted fingerling)		1		
7	Rainbow trout		20		
8	Brown trout				
9	Snow trout				
<b>5. Small Ruminants</b>					
1	Sheep		Number	1000	
2	Lamb				
3	Goat			NA	
4	Kid				
<b>6. Equine Sector</b>					
1	Donkey		Number	50000-70000	Depending upon the size and breed
2	Mule			60000-100000	
3	Stallion			25000-70000	
<b>7. Feed and Fodder</b>					
1	Cocks Foot	Kg	180		
2	Tall Fescue		350		
3	Italian Raye Grass		120		
4	White Colver		650		
5	Ruzi Grass		180		
6	Molasses Grass		180		
7	Stylo		350		
8	Sateria		145		
9	Gunia Grass		145		
10	Green Leaf Desmodium		280		
11	Lucenia Lucociphala		120		
12	Paspalum atraum				
13	Palisade Grass		145		
14	Rye Corn		35		
15	FOB & Stampade Oat		35		
16	Naked Oat		35		
17	Sweede		450		
18	Fodder Pumpkin		80		

Sl. No.	Item	Unit	Nu.	Remarks
19	Fodder Beet	Kg	350	
20	Local Turnip		400	
21	Paspalum		0.3	
22	Gautemala		2	
23	Fodder peanut		0.3	
24	Fodder tree seedling	Slip	15	
25	B. Brizanth		0.3	
26	Sugarcane		10	
27	Napier		2	
28	Willow cutting and others		15	
29	Legumes/Grass Hay	Kg	7	
30	Paddy Straw	Bundle	5	
31	Any Green Fodder	Kg	2	
<b>8. Animal Health Sector</b>				
1	Marek's disease		0.42	420 per vial of 1000 doses
2	Newcastle disease B <sub>1</sub> strain		0.145	29 per vial of 200 doses
3	IBD Intermediated strain (1 <sup>st</sup> dose)	Dose		
4	IBD Intermediated strain (2 <sup>nd</sup> dose)		0.26	52 per vial of 200 doses
5	IBD Intermediated strain (3 <sup>rd</sup> dose)			
6	Fowl pox			
7	Fowl pox (Repeat)		0.148	148 per vial of 1000 doses
8	NDR <sub>2</sub> B strain		0.275	27.5 per vial of 100 doses

## Vaccination schedule for Livestock locally produced vaccines

Sl. No.	Vaccine	Species affected, dosage & route of administration	Primary vaccination (first vaccination)	Booster	Re-vaccination	Remarks
1.	Anthrax spore vaccine (live)	Cattle, buffalo, sheep, goat & pigs Dosage and route: 1ml, Subcutaneous (S/C)	3-4 months of age	Not required	Annually in March/April	Vaccination is not required in a particular area if there has not been outbreak for three years after the last outbreak.
2.	Black Quarter vaccine (killed)	Cattle, buffalo & yaks sheep & goat Dosage and route: 5ml, S/C	3-4 months of age	Not required	Annually in March/April	Vaccinate animals up to 3 years of age. In endemic areas, healthy adults may be vaccinated.
3.	Haemorrhagic Septicaemia alum precipitated vaccine (killed)	Cattle, buffalo & yaks Dosage and route: 4ml, S/C	3-4 months of age	6 months	Every 6 months in April/May & Aug/Sept	Vaccination is to be done prior to onset of monsoon season and migration.
4.	Thermostable Newcastle Disease I2 vaccine	Poultry Dosage and route: one to two drops in the eye	7-10 days old	Every 3-4 months		Every 3 months in farms & endemic areas and every 4 months in non-endemic areas.
5.	Classical swine fever vaccine	Pigs Dosage and route: 1ml, S/C	45-60 days	Not required	Annually	The animals should be observed for about an hour after vaccination for any hypersensitivity reaction. <i>If it occurs, immediate treatment with antihistamines is advocated.</i>
6.	E. coli oral vaccine	Pigs (Pregnant sows)	75 days of gestation	Not required		One vial broth culture vaccine is mixed with 1.5 kg of feed and fed per sow <i>The vaccine should be given for 3 consecutive days starting from 75 days of gestation.</i> Used only in farms.

## Imported Vaccines

Sl. No.	Vaccine	Species affected, dosage & route of administration	Primary vaccination (first vaccination)	Booster	Re-vaccination	Remarks
7.	Raksha Ovac Foot and Mouth Disease vaccine (FMD)	Cattle, buffalo, yaks & calves. Dosage and route: 2ml, deep I/M Sheep & goat Dosage and route: 1ml, deep I/M	4 months of age	9 months after primary vaccination	Annual	6 monthly revaccination is recommended in the high risk zones in the southern Dzongkhags
8.	Raksha HS+BQ combined vaccine	Cattle, buffalo & calves. Dosage and route: 3ml, S/C (mid-neck region)	Six months of age or above	Not required	Annual	Revaccination is recommended in case of adverse climatic conditions like unseasonal rains, cyclones etc.
9.	Anti-rabies vaccine (Rabigen)	Dogs, cats Dosage and route: 1ml, S/C or I/M Cattle & horses Dosage and route: 1ml, I/M	<b>Carnivores</b> – A single injection from 3 months of age <b>Herbivores</b> – A single injection from 6 months of age		Annual vaccination is recommended	Primary vaccination can be administered at an early age but a repeat injection must be given at 3 or 6 months of age depending on the species.
10.	Raksharab rabies vaccine	Dogs, cattle & all other species Dosage and route: 1ml, S/C or I/M	At 3 months of age above			In case primary vaccination is given below 3 months, a booster dose should be given at the age of 3 <sup>rd</sup> month.
11.	Fowl pox	Poultry Dosage and route: 0.02ml, Wing web method or 0.2ml, I/M	8 weeks of age	16-18 weeks		In recurrent Fowl pox problematic flocks, vaccination by intramuscular route is preferred.
12.	Marek's vaccine	Poultry Dosage and route: 0.2ml, S/C (lower neck region)	Day old chick at hatchery level	Not required		In case of disease outbreaks at late stages, the chicks should be boosted with 0.2ml dose at 12-14 days of age.
13.	Gumboro (IBD) vaccine	Poultry Dosage and route: 0.03ml, Intraocular	3-days old	14-days old 30-days old		



14.	Newcastle Disease B <sub>1</sub> vaccine	Young chicks Dosage and route: 0.03ml, nasal instillation or eye drop	7-days old	8-9 weeks with ND R <sub>2</sub> B vaccine	16-18 weeks with ND R <sub>2</sub> B vaccine	Always vaccinate healthy birds and keep the vaccinated birds comfortable by providing adequate temperature, feed, water and good ventilation.
15.	Newcastle Disease R <sub>2</sub> B vaccine	Dosage and route: 0.5ml, I/M or S/C	8-9 weeks old	16-18 weeks old		Always vaccinate healthy birds and keep the vaccinated birds comfortable by providing adequate temperature, feed, water and good ventilation.

\* Please refer manufacturer's instructions and leaflets wherever provided.

## Poultry vaccination schedule in the organised farms

Age	Vaccine	Route	Dose	Remarks	Cost of vaccines (Nu.)
Day 1	Marek's disease	S/C	0.2ml per chick or as per the manufacturer's instruction.	Life-long immunity	0.42 per dose
Day 3	IBD Intermediate strain (first dose)	Eye drop	0.03ml or as per manufacturer's instruction.		0.26 per dose
Day 7	Newcastle Disease B <sub>1</sub> strain (primary vaccination)	Eye drop	0.03ml or as per manufacturer's instruction.	In case the locally produced I <sub>1</sub> ND vaccine is used it has to be repeated every 3 months; Dose rate -2 to 3 drops through eye. If the vaccine is given via drinking water, primary vaccination should be followed by a booster dose after 3 weeks, then re-vaccination should be done every after 3 months.	0.145 per dose
Day 14	IBD Intermediate strain (2 <sup>nd</sup> dose)	Eye drop or drinking water	0.03ml or as per manufacturer's instruction.	Once the birds are supplied to the Dzongkhag, vaccination against ND with thermo stable I <sub>1</sub> vaccine should be done every three months.	0.26 per dose
Day 28 - 30	IBD Intermediate strain (3 <sup>rd</sup> dose)	Eye drop or drinking water	0.03ml or as per manufacturer's instruction.	Vaccination against other disease need not be done unless there is outbreak around the vicinity.	0.26 per dose
Day 42 (6 weeks)	Fowl pox	I/M	0.2ml or as per manufacturer's instruction.		0.148 per dose
Day 56 (8 weeks)	ND R <sub>2</sub> B strain (booster)	S/C or I/M	0.5ml/bird or as per manufacturer's instruction.		0.275 per dose
Day 98 (14 weeks)	Fowl pox (repeat)	I/M	0.2ml or as per manufacturer's instruction.		0.148 per dose
Day 120 (16-18 weeks)	ND R <sub>2</sub> B strain	S/C or I/M	0.5ml/bird or as per manufacturer's instruction.	To be followed in layers and breeding stock.	0.275 per dose

Source: Department of Livestock

## Units of Measurements

Decimal preposition	
Deci (d) = 0.1	Deca (da) = 10
Cent (c) = 0.01	Hecto (h) = 100
Milli (m) = 0.001	Kilo (k) = 1,000
Linear measures	
British	Metric
1 inch (in) = 2.54cm	1 centimetre (cm) = 0.039 inch
1 foot (ft) = 30.84cm	1 metre (m) = 39.37 inches
1 yard (yd) = 0.91m	1 metre (m) = 1.0396 yds
1 mile (mi) = 1.61 km	1 metre (m) = 3.28 ft
1 foot (f) = 12 in	1 kilometre (km) = 1094 yds
1 yard (yd) = 3 (ft)	1 kilometre (km) = 0.621 miles
1 mile (mi) = 1760 yds	
Measures of surface	
1 sq. inch = 6.45 cm <sup>2</sup>	1 cm <sup>2</sup> = 0.155 sq. inch
1 sq. foot = 9.29 dm <sup>2</sup>	1 dm <sup>2</sup> = 15.5 sq. inch
1 sq. yard = 0.84 m <sup>2</sup>	1m <sup>2</sup> = 1.196 sq. yards
1 acre = 0.40 ha	1 hectare = 2.471 acres
1 sq. mile = 259 ha	1 km <sup>2</sup> = 247.11 acres
<i>One Langdo is the size of a certain land which is normally oxen-ploughed in a day. Example: 1 Langdo (on dry land):approximately a third of an acre = 1350 m<sup>2</sup>, 1 Langdo (on wetland): approximately a quarter of an acre = 1012 m<sup>2</sup>, Units of quantity Pon = 80, Neshu = 400, Dozen = 12</i>	
Measure of volume	
1 cubic inch = 16.4 cm <sup>3</sup>	1 cm <sup>3</sup> = 0.061 cub. inch
1 cubic foot =28.3 dm <sup>3</sup>	1 dm <sup>3</sup> = 61.023 cub. Inch
1 cubic yard = 0.77 m <sup>3</sup>	1 m <sup>3</sup> = 1.308 cub. Inch
1 pint = 5.68 dl	1 decilitre = 0.176 pint
1 quart = 1.14 l	1 litre = 1.759 pints
1 gallon (US) = 3.79 l	1 decalitre = 2.2 gal (US)
1 gallon (GB) = 4.551	1 hecto litre = 22.01 gal (GB)
1 quart = 2 pints	1 gallon = 4 quarts
<i>One Langdo is the size of a certain land which is normally oxen-ploughed in a day. A standard Drey (2 litres) contains 2.0 kg of dry sunflower seed or 2.4 kg of mustard seed. A Phita is one of third of a Drey, approximately size of Amul cheese Tin. One sang of butter is one fifth of a pock. Three sang equals approximately 1 kg. A bottle as used for milk or oil is 750 ml = 0.75 litres</i>	
Weight measures	
1 ounce (oz) = 28.4 g	1 kilogram (kg) = 3.527 oz
1 pound (lbs) = 0.45 kg	1 kilogram (kg) = 2.205 lbs
1 quintal = 100 kg	1 metric ton (MT) = 1000 kg
<i>A quintal = 100 kg. Often used for big bag. Big bag of potatoes = 80-90 kg</i>	

## Important Websites

Sl. No.	Ministry	Website
1	Ministry of Agriculture and Forests	<a href="http://www.moaf.gov.bt">www.moaf.gov.bt</a>
2	Ministry of Economy Affairs	<a href="http://www.moea.gov.bt">www.moea.gov.bt</a>
3	Ministry of Education	<a href="http://www.education.gov.bt">www.education.gov.bt</a>
4	Ministry of Finance	<a href="http://www.mof.gov.bt">www.mof.gov.bt</a>
5	Ministry of Foreign Affairs	<a href="http://www.mfa.gov.bt">www.mfa.gov.bt</a>
6	Ministry of Health	<a href="http://www.health.gov.bt">www.health.gov.bt</a>
7	Ministry of Home and Cultural Affairs	<a href="http://www.mohca.gov.bt">www.mohca.gov.bt</a>
8	Ministry of Information and Communications	<a href="http://www.moic.gov.bt">www.moic.gov.bt</a>
9	Ministry of Labour and Human Resources	<a href="http://www.molhr.gov.bt">www.molhr.gov.bt</a>
10	Ministry of Works and Human Settlement	<a href="http://www.mowhs.gov.bt">www.mowhs.gov.bt</a>

Sl. No.	Others	Website
1	Bhutan Portal	<a href="http://www.bhutan.gov.bt">www.bhutan.gov.bt</a>
2	Royal Civil Service Commission	<a href="http://www.rcsc.gov.bt">www.rcsc.gov.bt</a>
3	Royal Audit Authority	<a href="http://www.raa.gov.bt">www.raa.gov.bt</a>
4	Anti-Corruption Commission of Bhutan	<a href="http://www.anticorruption.org.bt">www.anticorruption.org.bt</a>
5	Election Commission of Bhutan	<a href="http://www.electionbhutan.gov.bt">www.electionbhutan.gov.bt</a>
6	National Environment Commission	<a href="http://www.nec.gov.bt">www.nec.gov.bt</a>
7	Gross National Happiness Commission	<a href="http://www.gnhc.gov.bt">www.gnhc.gov.bt</a>
8	Centre for Bhutan Studies	<a href="http://www.bhutanstudies.org.bt">www.bhutanstudies.org.bt</a>
9	Bhutan Development Bank Limited	<a href="http://www.bdb.bt">www.bdb.bt</a>
10	World Wildlife Fund, Bhutan	<a href="http://www.wwf bhutan.org.bt">www.wwf bhutan.org.bt</a>
11	National Land Commission	<a href="http://www.land.gov.bt">www.land.gov.bt</a>
12	Bhutan Trust Fund	<a href="http://www.bhutantrustfund.bt">www.bhutantrustfund.bt</a>

Sl. No.	Media	Website
1	Kuensel	<a href="http://www.kuenselonline.com">www.kuenselonline.com</a>
2	Bhutan Broadcasting Services	<a href="http://www.bbs.com.bt">www.bbs.com.bt</a>
3	Bhutan Times	<a href="http://www.bhutantimes.bt">www.bhutantimes.bt</a>
4	Bhutan Today	<a href="http://www.bhutantoday.bt">www.bhutantoday.bt</a>
5	The Journalist	<a href="http://www.thejournalist.bt">www.thejournalist.bt</a>
6	Business Bhutan	<a href="http://www.businessbhutan.bt">www.businessbhutan.bt</a>
7	Gyalchi Sarchog	
8	Kuzu FM	<a href="http://www.kuzoo.net">www.kuzoo.net</a>
9	Radio Valley	<a href="http://www.radiovalley.bt">www.radiovalley.bt</a>
10	Centennial Radio	<a href="http://www.centennialradio.net">www.centennialradio.net</a>
11	Yiga Radio	

འབྲུག་གཞུང་གི་མངའ་འོག་ལུ་ཡོད་པའི་ལྷན་ཁག་དང་ མ་ཁྲིམས་ཅན་གྱི་འདུས་ཚོགས་ དེལས་ རང་སྐྱོང་ལས་ལྷན་གྱི་ཚུའི་ཤོ།

## List of Ministries, Constitutional Bodies and Agencies under RGoB

English	རྫོང་ཁ།	English	རྫོང་ཁ།
Ministry of Agriculture & Forests	སོ་ནམ་དང་ནགས་ཚལ་ལྷན་ཁག།	Royal Civil Service Commission	རྒྱལ་གཞུང་གི་གཡོག་ལྷན་ཚོགས།
Ministry of Education	ཤེས་རིག་ལྷན་ཁག།	Royal Audit Authority	རྒྱལ་གཞུང་མི་སྲིད་ཞིབ་དབང་འཛིན།
Ministry of Finance	དངུལ་རྩིས་ལྷན་ཁག།	Dzongkha Development Commission	རྫོང་ཁ་གོང་འཕེལ་ལྷན་ཚོགས།
Ministry of Foreign Affairs	ཕྱི་འབྲེལ་ལྷན་ཁག།	Gross National Happiness Commission	རྒྱལ་ཡོངས་དགའ་བསྐྱེད་དང་ལེ་འཛོམས་ལྷན་ཚོགས།
Ministry of Home & Cultural Affairs	ནང་མི་དང་སྲོལ་རྒྱུན་ལྷན་ཁག།	National Land Commission	རྒྱལ་ཡོངས་ལ་ཆ་ལྷན་ཚོགས།
Ministry of Information & Communications	བརྒྱུན་འབྲེལ་ལྷན་ཁག།	National Commission for Women & Children	རྒྱལ་ཡོངས་ཨ་མ་སྲུ་དང་ལོ་ལོ་འབྲི་ལྷན་ཚོགས།
Ministry of Labour & Human Resources	ལས་གཤེགས་ལྷན་ཁག།	National Environment Commission	རྒྱལ་ཡོངས་མཐའ་འཁོར་གནས་སྤངས་ལྷན་ཚོགས།
Ministry of Economic Affairs	བསྐྱར་རྒྱས་ལྷན་ཁག།	Bhutan Information Communication & Media Authority	འབྲུག་བརྗོད་རྒྱུ་འབྲེལ་དང་བརྗོད་རྒྱུ་དབང་འཛིན།
Ministry of Works & Human Settlement	ཞབས་ཉེན་ལྷན་ཁག།	Royal University of Bhutan	འབྲུག་རྒྱལ་འཛིན་གཙུག་ལག་སློབ་མེ།
Ministry of Health	གསོ་བ་ལྷན་ཁག།	Royal Institute of Management	རྒྱལ་གཞུང་འཛིན་སྐྱོང་སློབ་མེ།
His Majesty's Secretariat	མངའ་བདག་རྒྱལ་ཡོད་ཡིག་ཚང།	National Statistical Bureau	རྒྱལ་ཡོངས་མུས་དཔྱད་བཞོད་འཛིན།
Cabinet Secretariat	ལྷན་རྒྱལ་གཞུང་ཚོགས་ཡིག་ཚང།	Centre for Bhutan Studies	དཔལ་འབྲུག་ཞིབ་འཇུག་སྡེ་བ།
Dratshang Lhentshok	གྲུ་ཚང་ལྷན་ཚོགས།	Bhutan Narcotic Control Agency	འབྲུག་སློལ་མེས་བཀག་འཛིན་ལས་མེ།
National Council	རྒྱལ་ཡོངས་ཚོགས་མེ།	Royal Body Guard	རྒྱལ་ཡོད་སྐྱ་སྲུང།
National Assembly	རྒྱལ་ཡོངས་ཚོགས་འདུ།	Royal Bhutan Army	རྒྱལ་གཞུང་བསྐྱར་སྲུང་དཔལ་མེ།
Judiciary	དང་ཁྲིམས་ལྷན་མེ།	Royal Bhutan Police	རྒྱལ་གཞུང་འབྲུག་གི་འགག་མེ།
Election Commission of Bhutan	འབྲུག་གི་བཅོག་འཇུག་ལྷན་ཚོགས།	Druk Holding & Investments	འབྲུག་མི་སེམ་རྒྱུ་རྩོམ་དང་གཞི་བརྒྱུ།
Anti-Corruption Commission of Bhutan	དང་ལྷན་བཀག་སྐྱོམ་ལྷན་ཚོགས།	Royal Monetary Authority of Bhutan	རྒྱལ་གཞུང་དངུལ་ལས་དབང་འཛིན།

ས་ནམ་དང་ནགས་ཚལ་ལྷན་ཁག་གི་འབྲེལ་བ་འཐབ་སའི་ལ་བྱང་ལག་ཆེད་ཀྱི་ཚུ།  
**Important contacts of the Ministry of Agriculture and Forests (MoAF)**

Department/Office	མི་ངོས་/ཡིག་ཚང་།	བརྒྱན་འཕྲིན། PABX/Telephone	པར་འཕྲིན། Fax No.	ཡོང་སའི་འབྲེལ་ འཆར་ལྗོངས། Website
<b>English</b>	ཚོང་ལ།			
<b>Hon'ble Minister</b>	མི་ཚེ་རྒྱན་པོ།	02-322482		www.moaf.gov.bt
Personal Secretary to Minister	མི་ཚེ་རྒྱན་པོ་གི་སྐྱེ་སྲིད་དུང་ཚེན།	02-337003		
PA to Minister	མི་ཚེ་རྒྱན་པོ་གི་སྐྱེ་སྲིད་ལས་རོགས།	02-322129	02-323153	
<b>Dasho Secretary</b>	དུང་ཚེན་ལྷན་པོ།	02-326735		
PA to Secretary	དུང་ཚེན་ལྷན་པོའི་སྐྱེ་སྲིད་ལས་རོགས།	02-322379	02-326834	
<b>མདོ་ཆེན་ཡིག་ཚང་ཞབས་དྲོག། Directorate Services</b>				
General Office	ལྷིང་བཏང་ཡིག་ཚང་།	02-322230/322726	02-324076	
Director	མདོ་ཆེན།	02-324317		
Chief Finance Officer	དུལ་ལྷུ་ལཱ་ལོ་འཛིན་འགོ་དཔོན།	02-323594		
Dy. Chief Finance Officer	དུལ་ལྷུ་ལཱ་ལོ་འཛིན་འགོ་དཔོན་འོགས།	02-333715		
One Window Bill Payment	སློབ་གཅིག་ལཱ་དུལ་སློབ་དཔང་།	02-333504		
Procurement Officer	མཎོ་སྐྱབ་འགོ་དཔོན།	02-322572		
Procurement Store	མཎོ་སྐྱབ་མཛེན་ཁང་།	02-339378		
<b>Human Resource Division (HRD)</b>	མི་སྡེ་ལས་ལྷན་པོ།			
General Office	ལྷིང་བཏང་ཡིག་ཚང་།	02-332506	02-323841	
Chief Human Resource Officer	མི་སྡེ་ལས་ལཱ་ལོ་འཛིན་འགོ་དཔོན།	02-335760		
HRO Secretariat	མི་སྡེ་ལས་འགོ་དཔོན།	02-332500		
HRO DoL	མི་སྡེ་ལས་འགོ་དཔོན།	02-335647		
HRO DoA/BAFRA	མི་སྡེ་ལས་འགོ་དཔོན།	02-332510		
HRO DoFPS	མི་སྡེ་ལས་འགོ་དཔོན།	02-332516/332527		
<b>Information and Communication Technology Division (ICTD)</b>	བདན་པོན་དང་བརྒྱན་འབྲེལ་འཕུལ་རིག་སྡེ་ཚོན།			
General Office	ལྷིང་བཏང་ཡིག་ཚང་།	02-323765/321311/ 321142	02-324520	

Department/Office	མི་རིམ་/ཡིག་ཚང་།	བརྒྱུན་འབྲིན། PABX/Telephone	ཕར་འབྲིན། Fax No.	ཡོང་ས་འབྲེལ་ འཆར་ཚོ། Website
-------------------	------------------	---------------------------------	----------------------	------------------------------------

<b>Internal Audit Unit (IAU)</b>	ནང་འཁོད་རྩིས་ཞིབ་ལས་ལུ་གུ།			
General Office	སྤྱི་བཟང་ཡིག་ཚང་།	02-322263 (Telefax)		
<b>Policy and Planning Division (PPD)</b>	སྲིད་བྱུས་དང་འཆར་གཞི་སྒྲིལ་ཚོ། ། སྲིད་འཆར་སྒྲིལ་ཚོ།			
General Office	སྤྱི་བཟང་ཡིག་ཚང་།	02-323745/323746 323747/323749		
Chief Planning Officer	འཆར་གཞི་གཙོ་འཛིན་འགོ་དཔོན།	02-322545		www.rnrstat.bt
PA to Chief Planning Officer	འཆར་གཞི་གཙོ་འཛིན་འགོ་དཔོན་གྱི་སྐྱེ་བའ་ལས་འགན་ཁུར་མཁན།	02-322168	02-323748	

**སློབ་ལས་ཁུངས།  
Department of Livestock (DoL)**

General Office	སྤྱི་བཟང་ཡིག་ཚང་།	02-322418		www.dol.gov.bt/ dolthimphu@gmail.com
Director	མ་དྲེད།	02-323146		
PA to Director General	ཡོང་ས་ཁུངས་མ་དྲེད་ཀྱི་སྐྱེ་བའ་ལས་འགན་ཁུར་མཁན།	02-322384	02-322094	
Livestock Research and Extension Division	སློབ་ལས་འཛུལ་དང་སྐྱེ་བའ་ལས་འགན་ཁུར་མཁན།	02-331410		
Livestock Production Division	སློབ་ལས་སྐྱེ་བའ་ལས་འགན་ཁུར་མཁན།	02-324933		
Livestock Animal Health Division	སློབ་ལས་མེད་འཕྲོད་བསྐྱེད་སྐྱོད་ལས་འགན་ཁུར་མཁན།	02-335401		
GoI Project	རྒྱ་གར་ལས་འགྲུལ། སློབ་ལས་ཁུངས།	02-335168		
<b>Vaccine Production Centre</b>	སློབ་ལས་ཐོན་སྐྱེ་ལུ་གུ།			
National Centre for Animal Health Serbithang	རྒྱལ་ཡོངས་སློབ་ལས་ཐོན་སྐྱེ་ལུ་གུ། གསར་སྐྱེ་མངའ་སྡེ།	02-351095 Hotline: 124	02-351095	www.ncah.gov.bt/ ncah123@gmail.com

<b>National Livestock Research and Development Centres</b>		རྒྱལ་ཡོངས་སློབ་ལས་འཛུལ་དང་གོང་འཕེལ་ལུ་གུ་བ		
National Dairy Research and Development Centre, Yusipang	རྒྱལ་ཡོངས་སློབ་ལས་འཛུལ་དང་གོང་འཕེལ་ལུ་གུ་བ། རྩོད་གསལ་ལུ་གུ།	17116976 (PABX) 17866132 (Liquid Nitrogen Production and Semen Processing Centre)		www.ndrc.gov.bt/ ndrc17@gmail.com
National Research and Development Centre for Aquaculture, Gelephu	རྒྱལ་ཡོངས་རྩྭ་དྲོད་གསོ་སྐྱོད་ལུ་གུ་བ། དགེ་ལེགས་ལུ་གུ།	06-251200	06-251201	www.nca.gov.bt/ nrdeal1984@gmail.com
National Research and Development Centre for Animal Nutrition Bumthang	རྒྱལ་ཡོངས་སེམས་ཅན་བསྐྱེད་སྐྱོད་ལས་འགན་ཁུར་མཁན་དང་གོང་འཕེལ་ལུ་གུ་བ། ལུ་གུ་བ།	03-631135	03-631227	

Department/Office	མི་ངོམ་/ཡིག་ཚང་།	བརྒྱུན་འཕྲིན། PABX/Telephone	པར་འཕྲིན། Fax No.	ཡིང་མའི་ལོ་ འཆར་རྒྱུ། Website
National Poultry Research and Development Centre, Sarpang	རྒྱལ་ཡོངས་ བྱ་རིགས་ཞིབ་འཚོམ་དང་གོང་འཕེལ་ལྷེ་བུ་བཀའ་སྐྱོང་ཁང་།	06-365351	06-365318	npdcbbutan@gmail.com
National Research and Development Centre for Reverine and Lake Fisheries, Haa	རྒྱལ་ཡོངས་རྩེད་ཉེ་རིགས་ཞིབ་འཚོམ་དང་གོང་འཕེལ་ལྷེ་བུ་བཀའ་སྐྱོང་ཁང་།	08-375611	08-375631	www.nrcrlf.gov.bt/nrcrlfmoaf@gmail.com
National Highland Research & Development Centre, Jakar	རྒྱལ་ཡོངས་ལ་ཁའི་ཞིབ་འཚོམ་དང་གོང་འཕེལ་ལྷེ་བུ་བཀའ་སྐྱོང་ཁང་།	03-631194	03-631218	www.rdcjakar.gov.bt
National Piggery Research & Development Centre, Sarpang	རྒྱལ་ཡོངས་ཕག་རིགས་ཞིབ་འཚོམ་དང་གོང་འཕེལ་ལྷེ་བུ་བཀའ་སྐྱོང་ཁང་།	06-251784	06-251783	
<b>Regional Livestock Development Centres</b> ལུང་ཕྱོགས་སློན་ཚོར་གོང་འཕེལ་ལྷེ་བུ་བཀའ་སྐྱོང་ཁང་།				
Regional Livestock Development Centre, Wangdue	ལུང་ཕྱོགས་སློན་ཚོར་གོང་འཕེལ་ལྷེ་བུ་བཀའ་སྐྱོང་ཁང་།	02-481317	02-481294	rldcwangdue@yahoo.com
Regional Livestock Development Centre, Zhemgang (Liquid Nitrogen Production Centre)	ལུང་ཕྱོགས་སློན་ཚོར་གོང་འཕེལ་ལྷེ་བུ་བཀའ་སྐྱོང་ཁང་།	03-741240	03-741239	www.rldczhemgang.gov.bt/zhemgangrldc@gmail.com
Regional Livestock Development Centre, Tsimasham, Chukha	ལུང་ཕྱོགས་སློན་ཚོར་གོང་འཕེལ་ལྷེ་བུ་བཀའ་སྐྱོང་ཁང་།	08-478779	08-478773	
Regional Livestock Development Centre, Kanglung (Liquid Nitrogen Production Centre)	ལུང་ཕྱོགས་སློན་ཚོར་གོང་འཕེལ་ལྷེ་བུ་བཀའ་སྐྱོང་ཁང་།	04-535274	04-535203	
<b>Thromde Veterinary Hospital and Satellite Veterinary Laboratory</b> ལྷོ་མེ་སློན་ཚོར་སྐྱེ་བའ་དང་ཡན་ལག་སློན་ཚོར་བརྒྱུན་འཕྲིན་ཁང་།				
Phuentsholing	ཕུན་ཚོགས་གྲིང་།	17983098		
Nganglam	ངང་ལམ།	17837399		
Dewathang	བདེ་བ་ཐང་།	17719534		
Gelephu	དགེ་ལེགས་ཕུག་།	17276400		
<b>Government Livestock Farms (Breeding/Production)</b> གཞུང་གི་སློན་ཚོར་གསོ་སྦྱང་ཁང་། (རིགས་སྤེལ་/ཐོན་སྐྱེད་)				
National Jersey Breeding Farm Samtse	རྒྱལ་ཡོངས་ཇར་སི་གསོ་སྦྱང་ཁང་།	05-365407	05-365427	
National Nucleus Pig Breeding Centre Yusipang	རྒྱལ་ཡོངས་ཕག་རིགས་སྤེལ་ལྷེ་བུ་བཀའ་སྐྱོང་ཁང་།	02-351092 (Telefax)		
Regional Cattle Breeding Centre Bumthang	ལུང་ཕྱོགས་སློན་ཚོར་རིགས་སྤེལ་ལྷེ་བུ་བཀའ་སྐྱོང་ཁང་།	03-631238		brownswissfarm@gmail.com
National Small Ruminants Research and Development Centre, Bumthang	རྒྱལ་ཡོངས་ རྩྭ་རྒྱུ་སྤེལ་ལྷེ་བུ་བཀའ་སྐྱོང་ཁང་།	77192132		
National Nublanc Breeding Farm Tashiyangphu, Trashigang	རྒྱལ་ཡོངས་ལུང་ཕྱོགས་སློན་ཚོར་ཁང་།	77103634		
Regional Poultry Breeding Centre Khangkhu, Paro	ལུང་ཕྱོགས་བྱ་རིགས་བྱ་རིགས་སྤེལ་ལྷེ་བུ་བཀའ་སྐྱོང་ཁང་།	08-272955	08-272955	rpbcparo11@gmail.com

Department/Office	མི་རིང་ལེགས་ཚང་།	བརྒྱུན་འཕྲིན། PABX/Telephone	ཕར་འཕྲིན། Fax No.	ཡོང་སའ་འབྲེལ་ འཆར་སྟོན། Website
Regional Poultry and Pig Breeding Centre, Lingmethang, Mongar	ལུང་ཕྱོགས་བྱ་དང་ཕག་པོ་སྐྱོང་ལྗེ་བཀའ་སྐྱོང་མི་ཐང་།	04-744274	04-744219	lingmethangfarm@gmail.com
Regional Mithun Breeding Centre Arong, Samdrup Jongkhar	རྒྱལ་ཡོངས་བཟེན་གསོ་སྐྱོང་ཁང་། ཨི་རོང་བསམ་གུབ་ལྗོངས་མཁའ་མང་།	17131816	07-242107	rmbfaron@gmail.com
Regional Cattle Breeding Centre Wangkha	ལུང་ཕྱོགས་སྐོ་རོང་རིགས་སྲེལ་ལྗེ་བཀའ་སྐྱོང་ཁང་།	05-290424/290420	05-290424	brrai@moaf.gov.bt
Regional Mithun Breeding Farm Wangdigang, Zhemgang	ལུང་ཕྱོགས་བཟེན་གསོ་སྐྱོང་ཁང་། དབང་ལུས་སྐང་། གཞལ་མཁའ་སྐང་།	77192118		rmbfzgang@gmail.com
National Equine Research and Development Centre, Bumthang	རྒྱལ་ཡོངས་རྟ་ལེན་ལེ་འཛོམས་དང་གོང་འཕེལ་ལྗེ་བཀའ་སྐྱོང་ཁང་།	03-631457		
Native Poultry and Heifer Production Centre, Sertsam Lhuentse	གཡུས་བྱ་དང་བ་ཐམ་ཐོན་སྐྱོང་ལྗེ་བཀའ་སྐྱོང་ཁང་།	17603841		
Mastiff Farm, Gasa	འབྲོག་ལུ་ཁྱི་གསོ་སྐྱོང་ཁང་། མགར་སལ།	17410626		
National Integrated Yak Farm, Haa	རྒྱལ་ཡོངས་ཚིག་སྐྱེལ་གཡུག་གསོ་སྐྱོང་ཁང་། ཀྱི།	17643235		
<b>Others</b>				
National Veterinary Hospital Motithang	རྒྱལ་ཡོངས་སྐོ་རོང་སྐྱོན་ལའང་། ལུ་རྟིག་ཐང་།	02-322432	02-324656	
Regional Centre for Aquaculture Phuntshothang, Samdrup Jongkhar	ལུང་ཕྱོགས་རྩ་ལྷོད་ལྗེ་བཀའ་སྐྱོང་ཁང་། ཐུན་ཚོགས་ཐང་། བསམ་གུབ་ལྗོངས་མཁའ་མང་།	07-243002 17792653	07-243002	
Livestock Central Store Phuentsholing	སྐོ་རོང་མཚོན་ལའང་ལྗེ་བཀའ་སྐྱོང་ཁང་། ཐུན་ཚོགས་རྒྱུ་ཚང་།	05-252291	05-253691	

**ནགས་ཚལ་དང་གླིང་གི་ཞབས་ཏྲུག་ལས་ཁུངས།  
Department of Forests and Park Services (DoFPS)**

General Office	སྤྱི་བཅའ་ཡིག་ཚང་།			
Director	མ་དེ་ཚེན།	02-323055	02-322836 322395	www.dofps.gov.bt
PABX	མ་དེ་ཚེན་གྱི་སྐྱེལ་ལས་འཕེལ་ལྗེ་བཀའ་སྐྱོང་ཁང་།	02-321185		
Forest Resources Management Division (FRMD)	ནགས་ཚལ་ཐོན་སྐྱོང་འཛོམས་སྐྱོང་སྡེ་ཚང་།	02-327723 02-330016	02-322836/ 322560	
Forest Protection and Enforcement Division (FPED)	ནགས་ཚལ་སྲུབ་སྐྱོབ་དང་བསྐྱར་སྐྱོད་སྡེ་ཚང་།	02-322487	02-322836	
Nature Conservation Division (NCD)	རང་བཞིན་གནས་སྲུབ་ལུས་སྐྱོང་སྡེ་ཚང་།	02-325042 02-324131	02-335806	
Social Forestry and Extension Division (SPED)	མི་སྡེ་ནགས་ཚལ་དང་རྒྱ་བསྐྱེད་སྡེ་ཚང་།	02-323138	02-328394	
Watershed Management Division (WMD)	རྒྱ་འབབ་ས་གནས་འཛོམས་སྐྱོང་སྡེ་ཚང་།	02-323568 02-321193	02-321462	



Department/Office	མི་ངོམ་/ཡིག་ཚང་།	བརྒྱུན་འབྲིན། PABX/Telephone	ཕར་འབྲིན། Fax No.	ཡོང་ས་འགྲེལ་ འཆར་རྒྱ། Website
Ugyen Wangchuck Institute for Conservation and Environmental Research (UWICER), Bumthang	ཨོ་རྒྱལ་དབང་ལྷག་མ་ འཕེལ་གནས་སྤངས་ཞིབ་འཚོལ་དང་ ཉམས་སྲུང་སྤེལ་ཁང་། ལུས་ཐང་།	03-631923	03-631925	www.uwice.gov.bt
Bhutan Tiger Centre	འབྲུག་སྟག་རྟེན།	77113113/17503160		
<b>Protected Areas</b>				
<b>སྤང་སྐྱོབ་ས་ཁོངས།</b>				
Jigme Dorji National Park (JDNP) Damji, Gasa	འཛིག་ས་མེད་དོ་རྗེ་རྒྱལ་ཡོངས་སྤྱིང་ག། དམ་སྐྱིས། མག་རས།	16288188 16288304 (PABX)	02-688303	
Jigme Singye Wangchuck National Park (JSWNP), Trongsa	འཛིག་ས་མེད་སེ་རྗེ་དབང་ལྷག་རྒྱལ་ཡོངས་སྤྱིང་ག། ཁྲོང་ གསམ།	03-527006 03-527005 (PABX)	03-527049	
Phrumsengla National Park (PNP) Ura, Bumthang	ལུས་སེང་ལ་རྒྱལ་ཡོངས་སྤྱིང་ག། ལུ་ར། ལུས་ཐང་།	77192123 77192125 (PABX)	77992181	
Wangchuck Centennial National Park (WCNP), Nasiphel, Bumthang	དབང་ལྷག་བརྒྱུ་འཁོར་རྒྱལ་ཡོངས་སྤྱིང་ག། ལུས་ཐང་།	03-631604	03-634103	
Royal Manas National Park (RMNP) Gelephu	རྒྱལ་བཀའ་རྒྱལ་སྤྱིང་ག། དག་ལེགས་ཕུག།	06-251256 06-251258 (PABX)	06-251255	
Bumdeling Wildlife Sanctuary (BWS) Trashiyangtse	ལུས་སྤེ་སྤྱིང་རི་དྭགས་སྤང་སྐྱོབ་ས་ཁོངས། བཀྲ་ཤིས་གཡང་རྩེ།	04-781155	04-781161	
Sakteng Wildlife Sanctuary (SWS) Trashigang	སཀ་རྟེང་རི་དྭགས་སྤང་སྐྱོབ་ས་ཁོངས། བཀྲ་ཤིས་སྤང་།	17121488 17121158 (PABX)	16481317	
Jomotsangkha Wildlife Sanctuary (JWS), Samdrup Jongkhar	རྫོམ་གཙང་ལ་རི་དྭགས་སྤང་སྐྱོབ་ས་ཁོངས། བསམ་གྲུབ་ ལྗོངས་མཁར།	07-264026 07-264004 (PABX)	07-251206	jomotsangkhwild- lifesanctuary@ gmail.com
Phibsoo Wildlife Sanctuary (PWS) Themba, Sarpang	ཕིམ་སུ་རི་དྭགས་སྤང་སྐྱོབ་ས་ཁོངས།	17151667 17151663 (PABX)	06-365107	
Jigme Khesar Strict Nature Reserve (JKSNR), Haa	འཛིག་ས་མེད་གཤམ་ར་ར་བཞིན་སྤང་སྐྱོབ་ས་ ས་ཁོངས། ལྷ།	08-375300	08-375386	
<b>ནགས་ཚལ་སྤེ་རྒྱ་རྒྱ་ཚོན་གྱི་ཡིག་ཚང་། Divisional Forest Offices</b>				
Chief Forestry Officer, Bumthang	ནགས་ཚལ་གཙོ་འཛིན་འགོ་དཔོན། ལུས་ཐང་།	03-631181 03-631182 (PABX)	03-631131	
Chief Forestry Officer, Trashigang	ནགས་ཚལ་གཙོ་འཛིན་འགོ་དཔོན། བཀྲ་ཤིས་སྤང་།	04-521494 04-521240 (PABX)	04-521251	
Chief Forestry Officer, Mongar	ནགས་ཚལ་གཙོ་འཛིན་འགོ་དཔོན། མོང་རྒྱང་།	04-641327 04-641146 (PABX)	04-641153	
Chief Forestry Officer, Paro	ནགས་ཚལ་གཙོ་འཛིན་འགོ་དཔོན། ལུ་རོ།	08-271221 08-272163 (PABX)	08-272162	
Chief Forestry Officer, Sarpang	ནགས་ཚལ་གཙོ་འཛིན་འགོ་དཔོན། གསམ་རྒྱང་།	06-365341	06-365107	
Chief Forestry Officer Samdrup Jongkhar	ནགས་ཚལ་གཙོ་འཛིན་འགོ་དཔོན། བསམ་གྲུབ་ལྗོངས་ མཁར།	07-251038	07-251206	
Chief Forestry Officer, Tsirang	ནགས་ཚལ་གཙོ་འཛིན་འགོ་དཔོན། ལྷ་ར་།	16901530 06-471117 (PABX)	06-471205	
Chief Forestry Officer, Gedu	ནགས་ཚལ་གཙོ་འཛིན་འགོ་དཔོན། དག་འདུ།	05-282236	05-282364	

Department/Office	མི་ངོས་/ཡིག་ཚང་།	བརྒྱུན་འབྲིན། PABX/Telephone	ཕར་འབྲིན། Fax No.	ཡོང་ས་འབྲེལ་ འཆར་རྒྱ། Website
Chief Forestry Officer, Zhemgang	ནགས་ཚལ་གཙོ་འཛིན་འགོ་དཔོན། གཞལ་རྒྱང་།	17123146 03-741205 (PABX)	03-741221	
Chief Forestry Officer, Thimphu	ནགས་ཚལ་གཙོ་འཛིན་འགོ་དཔོན། ཐིམ་ཕུག་།	02-328758 02-322092 (PABX)	02-328696	
Chief Forestry Officer, Samtse	ནགས་ཚལ་གཙོ་འཛིན་འགོ་དཔོན། བསམ་མེ།	05-365359 05-365253 (PABX)	05-365510	
Chief Forestry Officer, Wangdue	ནགས་ཚལ་གཙོ་འཛིན་འགོ་དཔོན། དབང་བཅའ་དུས།	02-376008 02-376107 (PABX)	03-376193	
Chief Forestry Officer, Dagana	ནགས་ཚལ་གཙོ་འཛིན་འགོ་དཔོན། དར་དཀར་།	17620592 06-483190 (PABX)		
Chief Forestry Officer, Pemagatshel	ནགས་ཚལ་གཙོ་འཛིན་འགོ་དཔོན། ཡུ་དགའ་ཚལ།	07-471160	07-471147	

**མོ་ནམ་ལས་ཁུངས།**  
**Department of Agriculture (DoA)**

General Office	ཤྱིར་བཏང་ཡིག་ཚང་།	02-322228/331316/ 323183/323184	02-323562	www.doa.gov.bt
Director	མ་དོ་ཚེན།	02-322805		
PA to Director	མ་དོ་ཚེན་གྱི་སྐྱོད་ལས་མོག་ས།	02-331317		
Joint Director	མཉམ་འབྲེལ་མ་དོ་ཚེན།	02-321291	02-335458	

**སྡེ་ཚན་དང་ལས་འཛིན་འགོ་དཔོན་/འགོ་འདྲིན་པ་ཚུ།**  
**Divisions and Programmes**

Chief Agriculture Officer Agriculture, Research & Extension Division	མོ་ནམ་གཙོ་འཛིན་འགོ་དཔོན། ཞིབ་འཇོལ་དང་རྒྱ་བསྐྱོད་ སྡེ་ཚན།	02-321097		
Chief Agriculture Officer Agriculture Production Division	མོ་ནམ་གཙོ་འཛིན་འགོ་དཔོན། མོ་ནམ་ཐོན་སྐྱེད་སྡེ་ཚན།	02-336946	02-325837	
Land Conversion and Land Acquisition	ས་གཞི་བསྐྱར་བཅོས་དང་ ས་ལོ་སྤྱོད།	02-336462	02-335458	
National Soil Service Centre (NSSC), Semtokha	རྒྱལ་ཡོངས་ས་འཛིན་འགོ་དཔོན་ལྷན་ཁང་། སེམ་མེ་རྒྱལ་ཁང་།	02-351037/351174	02-351038	www.nssc.gov.bt
National Plant Protection Centre (NPPC), Semtokha	རྒྱལ་ཡོངས་སྡོ་ཤིང་སྲུང་སྐྱོབ་ལྷན་ཁང་། སེམ་མེ་རྒྱལ་ཁང་།	02-351016	02-351656	www.nppc.gov.bt
National Mushroom Centre (NMC), Wangchutaba	རྒྱལ་ཡོངས་ཤ་སྐྱ་ལྷན་ཁང་།	02-351751	02-351752	

**མོ་ནམ་བཟོ་རིག་སྡེ་ཚན།**  
**Agriculture Engineering Division**

Chief Engineer	བཟོ་རིག་གཙོ་འཛིན་འགོ་དཔོན།	02-329122	02-335471	
Executive Engineer, Irrigation	བཟོ་རིག་བཟོ་རིག་འགོ་དཔོན། ཞིང་ལུ་ལས་ལྟན།	02-336927/337496		
Executive Engineer Building Section	བཟོ་རིག་བཟོ་རིག་འགོ་དཔོན། རྒྱུ་བཟོ་ལས་ལྟན།	02-335356		
Executive Engineer Farm Road Section	བཟོ་རིག་བཟོ་རིག་འགོ་དཔོན། མོ་ནམ་ཞིང་ལས་ལས་ལྟན།	02-334295		

Department/Office	མི་ངོས་/ཡིག་ཚང་།	བརྒྱུན་འཕྲིན། PABX/Telephone	ཕར་འཕྲིན། Fax No.	ཡིང་མ་འབྲེལ་ འཆར་རྒྱ། Website
-------------------	------------------	---------------------------------	----------------------	-------------------------------------

Irrigation Engineer	ཞིང་རྒྱུ་འབྲེལ་བཅོམ་འགོ་དཔོན།	02-337496		
---------------------	-------------------------------	-----------	--	--

Chief Advisor, TCP	གོམ་རྫོན་གཙོ་འཛིན།	02-329162		
--------------------	--------------------	-----------	--	--

**རྒྱལ་ཡིང་མ་འབྲེལ་བསྐྱེད་བསྐྱོར་ལྷན་ཁང་།  
National Post Harvest Centre (NPHC), Paro**

General Office	རྒྱུར་བཅའ་ཡིག་ཚང་།	08-272406	08-271494	
----------------	--------------------	-----------	-----------	--

Chief Post Production Officer	ཐོག་བསྐྱེད་བསྐྱོད་གཙོ་འཛིན་འགོ་དཔོན།	08-271493		
-------------------------------	--------------------------------------	-----------	--	--

Integrated Food Processing Plant (IFPP), Dagapela	སྤྱི་བསྐྱེད་མཉམ་བཟུང་སྤྱོད་བཅོམ་སྐྱུར་འཕུལ་ཁང་། དར་དཀར་པད་ལ།	06-483169		
---	--	-----------	--	--

Integrated Food Processing Plant Goling, Zhemgang	སྤྱི་བསྐྱེད་མཉམ་བཟུང་སྤྱོད་བཅོམ་སྐྱུར་འཕུལ་ཁང་། རྒྱ་མཚོ་གཤེན་གཤེན་ལྷན་ཁང་།	03-790958		
---	--	-----------	--	--

Integrated Food Processing Plant Lingmethang, Mongar	སྤྱི་བསྐྱེད་མཉམ་བཟུང་སྤྱོད་བཅོམ་སྐྱུར་འཕུལ་ཁང་། རྒྱ་མཚོ་འཛུགས་ལྷན་ཁང་།	04-744126		
--	--	-----------	--	--

Integrated Food Processing Plant Shumar, Pemagatshel	སྤྱི་བསྐྱེད་མཉམ་བཟུང་སྤྱོད་བཅོམ་སྐྱུར་འཕུལ་ཁང་། ལུ་མཚལ་པོ་དག་འཚོལ་།	07-440923		
--	---	-----------	--	--

**སོ་ནམ་འཕུལ་ཆས་ལྷན་ཁང་།  
Agriculture Machinery Centre (AMC), Paro**

General Office	རྒྱུར་བཅའ་ཡིག་ཚང་།	08-271460	08-271568	www.amc.gov.bt
----------------	--------------------	-----------	-----------	----------------

Program Director	ལས་རིམ་མདུན་ཚིན།	08-270007		
------------------	------------------	-----------	--	--

Farm Mechanisation Specialist	སོ་ནམ་འཕུལ་སྐྱུར་མཉམ་འཕེལ་མཚོན།	08-272130		
-------------------------------	---------------------------------	-----------	--	--

Administrative Officer	བདག་སྐྱོར་འགོ་དཔོན།	08-272453		
------------------------	---------------------	-----------	--	--

Accounts Section	ཕྱི་ལ་ལས་ཚང་།	08-272451		
------------------	---------------	-----------	--	--

Principal Agri. Engineer, Agriculture Machinery Certification Section (AMCS)	སོ་ནམ་བཅོམ་འགོ་དཔོན་གཙོ་བོ། སོ་ནམ་འཕུལ་ཆས་རྒྱུར་སྤྲོད་ལྷན་ཁང་།	08-272283		
--	---	-----------	--	--

Engineer, Agriculture Mechanisation Research Section (AMRS)	བཅོམ་འགོ་དཔོན། སོ་ནམ་འཕུལ་ཆས་ཞིབ་འཚོལ་སྤྲོད་ལྷན་ཁང་།	08-272008		
---	---	-----------	--	--

Engineer, Agriculture Mechanisation Training Section (AMTS)	བཅོམ་འགོ་དཔོན། སོ་ནམ་འཕུལ་ཆས་སྤོང་བརྒྱུ་ལྷན་ཁང་།	02-272452	02-481297	
---	---	-----------	-----------	--

Regional Manager, RAMC, Bondey Paro	ལུང་ཕྱོགས་འཛིན་སྐྱོང་པ། ལུང་ཕྱོགས་སོ་ནམ་འཕུལ་ཆས་ལྷན་ཁང་།	04-535325	04-535485	
-------------------------------------	---	-----------	-----------	--

Regional Manager, RAMC, Khangma Trashigang	ལུང་ཕྱོགས་འཛིན་སྐྱོང་པ། ལུང་ཕྱོགས་སོ་ནམ་འཕུལ་ཆས་ལྷན་ཁང་། བཟླ་ལྷོ་བཟླ་བ།	04-535485		
--	--	-----------	--	--

Regional Manager, RAMC Samtenling, Gelephu	ལུང་ཕྱོགས་འཛིན་སྐྱོང་པ། ལུང་ཕྱོགས་སོ་ནམ་འཕུལ་ཆས་ལྷན་ཁང་། དགེ་ལེགས་ལྷན་ཁང་།	06-252795		
--	---	-----------	--	--

Department/Office	མི་ངོམ་/ཡིག་ཚང་།	བརྒྱན་འབྲིན། PABX/Telephone	ཕར་འབྲིན། Fax No.	ཡོང་མཁའ་བྲེལ་ འཆར་རྒྱ། Website
<b>རྒྱལ་ཡོངས་སོན་རིགས་ལྷེ་བ་ ལྷ་མོ། National Seed Centre (NSC), Paro</b>				
General Office	ལྷིང་བཀྲང་ཡིག་ཚང་།	08-271465 /271516	08-271206	www.nsc.gov.bt
Program Director	ལས་རིམ་མདོ་ཚེན།	08-271462	-do-	
Marketing Officer	ཚོང་འབྲེལ་འགོ་དཔོན།	08-271709	-do-	
Regional Manager, NSC, Bajo Farm Wangdue	ལུང་ཕྱོགས་འཛིན་སྐྱོང་པ།	02-481872	02-481259 (Telefax)	
Farm Manager, NSC Nangsiphel Farm, Bumthang	འཛིན་སྐྱོང་པ།	03-631124	03-631124 (Telefax)	
Regional Manager, NSC Jachephu Farm, Trashiyangtse	ལུང་ཕྱོགས་འཛིན་སྐྱོང་པ།	04-781178	04-781178 (Telefax)	
Regional Manager, NSC Bhur Farm, Gelephu	ལུང་ཕྱོགས་འཛིན་སྐྱོང་པ།	06-252265	06-252261	
<b>ཞིབ་འཇོམ་དང་གོང་འཕེལ་ལྷེ་བ། Agriculture Research and Development Centres (ARDCs)</b>				
National Centre for Organic Agriculture-Yusipang	རྒྱལ་ཡོངས་རང་བཞིན་སོ་ནམ་ལྷེ་བ་ འོད་གསལ་ལྷེ་བ།	77191124	77992000	www.rdcyusipang.gov.bt
Agriculture Research and Development Centre (ARDC)-Bajo	སོ་ནམ་ཞིབ་འཇོམ་དང་གོང་འཕེལ་ལྷེ་བ། བཛོ།	02-481361	02-481311	www.rcbajo.gov.bt
ARDC-Bhur, Gelephu	སོ་ནམ་ཞིབ་འཇོམ་དང་གོང་འཕེལ་ལྷེ་བ། ལྷུབ། དགེ་ལགས་ལུག།	77191519/ 77191520/ 77191521	06-252275	
ARDC sub-station, Tingtibi Zhemgang	སོ་ནམ་ཞིབ་འཇོམ་དང་གོང་འཕེལ་ལྷེ་བ། དཔག་ལག་ལས་ཚོན། ཉིང་ཉི་ལྷོས། གཞལ་སྐང།	03-790026	03-790055	
ARDC-sub-station, Darla, Chukha	སོ་ནམ་ཞིབ་འཇོམ་དང་གོང་འཕེལ་ལྷེ་བ། དཔག་ལག་ལས་ཚོན། དར་ལ། ལུལ།	16572647	17116312	
ARDC-Wengkhar, Mongar	སོ་ནམ་ཞིབ་འཇོམ་དང་གོང་འཕེལ་ལྷེ་བ། མེང་ཁར། མོང་སྐར།	04-680014/680009 Hotline-204	04-641102	
ARDC sub-station, Khangma	ཞིབ་འཇོམ་དང་གོང་འཕེལ་ལྷེ་བ། དཔག་ལག་ལས་ཚོན། ལང་མ།	04-535193; Telefax	04-535193	
ARDC sub-station, Lingmethang	ཞིབ་འཇོམ་དང་གོང་འཕེལ་ལྷེ་བ། དཔག་ལག་ལས་ཚོན། ལྷིང་མེད་ཐང།	04-744126	04-744126	
ARDC sub-station, Tsirang	ཞིབ་འཇོམ་དང་གོང་འཕེལ་ལྷེ་བ། དཔག་ལག་ལས་ཚོན། ལྷིང་ར།	06-471552	06-471552	
<b>སོ་ནམ་ཚོང་འབྲེལ་དང་མཉམ་ལས་ཚོགས་སྡེ་ལས་ཁུངས། Department of Agricultural Marketing and Cooperatives (DAMC)</b>				
General Office	ལྷིང་བཀྲང་ཡིག་ཚང་།	02-322909/335741/ 331638/	02-324898	www.agrimarket.gov.bt
Director General	ཡོངས་ཁྲབ་མདོ་ཚེན།	02-335685		

Department/Office	མི་ངོམ་/ཡིག་ཚང་།	བརྒྱུན་འབྲིན། PABX/Telephone	པར་འབྲིན། Fax No.	ཡིང་མ་འབྲེལ་ འཆར་རྒྱ། Website
PA to Director General	ཡིང་མ་ཁུབ་མདོ་ཚེན་གྱི་སྐྱོད་ལས་འགན།	02-322909/335741/ 331638/328791		
Regional Agricultural Marketing Cooperatives, Mongar	ལང་ཕྱོགས་མོ་ནམ་ཚོང་འབྲེལ་དང་མཉམ་ལས་ཚོགས་པ་ སྤྱི་མོང་སྐར།	04-641322/641227	04-641252	
Regional Agricultural Marketing Cooperatives, Gelephu	ལང་ཕྱོགས་མོ་ནམ་ཚོང་འབྲེལ་དང་མཉམ་ལས་ཚོགས་པ་ དགེ་ལེགས་པ།	06-251106		
DAMC, Centenary Farmers' Market	བརྒྱུ་འཁོར་མོ་ནམ་ཚོང་འབྲེལ་	330015/17581915/ 17658155		
B-Coop Shop	མཉམ་ལས་ཚོགས་ལུ་ཁང་།	339131		
<b>འབྲུག་མོ་ནམ་དང་ཟ་ཆས་ཁྲིམས་འོག་དབང་འཛིན།</b> <b>Bhutan Agriculture and Food Regulatory Authority (BAFRA)</b>				
General Office	ཐྱིེ་བཀྲང་ཡིག་ཚང་།	02-327031/325790 /325993	02-327032/ 335540	www.bafra.gov.bt
Director General	ཡིང་མ་ཁུབ་མདོ་ཚེན།	02-327030 Extn: 101		
PA to Director General	ཡིང་མ་ཁུབ་མདོ་ཚེན་གྱི་སྐྱོད་ལས་འགན།	02-331349 Extn: 102		
Chief Plant and Animal Biosecurity Division	གཙོ་འཛིན། སྤྱི་ཡོང་དང་མིམས་ཅན་སྐྱེ་ལྗན་ཉེན་སྲུང་ལྟེང་།	Extn: 103		
Chief Food Quality and Safety Division	གཙོ་འཛིན། བཟའ་འབྲུང་སྐྱུ་ཚང་དང་ཉེན་སྲུང་ལྟེང་།	Extn: 114		
Adm/Acct. Section	བདག་སྐྱོང་/དབུལ་ཕྱི་མེ་ཚང་།	Extn: 109/110/111		
Officer In-Charge, National Food Testing Laboratory, Yusipang	དཔྱད་ཁང་གཙོ་འཛིན། རྒྱལ་ཡིང་མ་ཚོང་རིག་བརྟག་དཔྱད་ཁང་། འོད་གསལ་སྐར།	Microbiology Lab- 17126741	02-380015	
GMO Laboratory	ཨ་འོ་བརྟག་དཔྱད་ཁང་།	17126736		
Nutrition Laboratory	ཟས་བཅུད་བརྟག་དཔྱད་ཁང་།	17126740		
Contaminant/Residue Laboratory	བཙོག་རྒྱུ་བརྟག་དཔྱད་ཁང་།	17126738		
Manager, Centenary Farmers' Market	འཛིན་སྐྱོང་། བརྒྱུ་འཁོར་མོ་ནམ་ཚོང་འབྲེལ་	02-337465	02-335814	
<b>འབྲུག་མོ་ནམ་དང་ཟ་ཆས་ཁྲིམས་འོག་དབང་འཛིན་གྱི་ རྫོང་ཁག་ཡིག་ཚང་།</b> <b>BAFRA Dzongkhag Offices</b>				
Bumthang	བུམ་ཐང་རྫོང་ཁག།	03-631447	03-631462	
Chukha	ཚུམ་རྫོང་ཁག།	08-478648	08-478599 08-471035	
Gedu Office	དགེ་འདུ་ཡིག་ཚང་།	05-282242 (Telefax)		
Phuentsholing	ཕུན་ཚོགས་གླིང་།			
Quarantine Station Phuentsholing	ནད་བརྟག་ཐུར་བཞག་ཡིག་ཚང་། ཕུན་ཚོགས་གླིང་།	05-252230 (Telefax)		
Phuentsholing Town Permit Office	ཕུན་ཚོགས་གླིང་ཁོམ་གྱི་ཚོག་ཐུས་ཡིག་ཚང་།	05-251718		

Department/Office	མི་ངོམ་/ཡིག་ཚང་།	བརྒྱུན་འཕྲིན། PABX/Telephone	ཕར་འཕྲིན། Fax No.	ཡིང་མ་འགྲེལ་ འཆར་སྟོན། Website
Main Border Gate Office	ས་མཚམས་འཛུལ་སྐྱེའི་ཡིག་ཚང་།	05-253705		
Dagana	དང་དཀར་ནང་རྫོང་ལག།	06-481199	06-481170	
Sunkosh Check Post	སུག་ལོ་ཤེན་ཞིབ་དཔྱད་སྟོན་པ།	06-460501 (Telefax)		
Lhamoizingkha Dungkhag	ལྷ་མོའི་འཛོལ་རྩུབ་ལག།	17161728		
Gasa	མགར་ས་རྫོང་ལག།	02-16288161	02-688219	
Haa	ལྷ་རྫོང་ལག།	08-375211	08-375680	
Lhuentse	ལུང་ཅེ་རྫོང་ལག།	04-545158	04-545159	
Mongar	མོང་རྫོང་རྫོང་ལག།	04-641320	04-641597	
Paro	ཕུ་ལོ་རྫོང་ལག།	08-272471	08-271940	
International Airport Paro	ཕུ་ལོ་རྒྱལ་སྤྱིའི་གནམ་གྲུ་མང་།	08-271583	08-271523	
Pemagatshel	པལ་དག་འཛོལ་རྫོང་ལག།	07 471192	07-471457	
Nanglam Dungkhag	ངང་ལམ་རྩུབ་ལག།	07-481210	07-481203	
Punakha	ཕུ་ན་ལ་རྫོང་ལག།	02-584413	02-584142	
Sipsu, Samtse	བསམ་ཅེ་རྫོང་ལག།	77106499	05-365865	
Quarantine Station Samtse	བསམ་ཅེ་ནད་བརྟག་ལྷུང་བཞག་ཡིག་ཚང་།	05-365364/365582	05-365783	
Gomtu Office	གོམ་ཏུ་ཡིག་ཚང་།	05-371134 (Telefax)		
Samdrup Jongkhar	བསམ་བླག་རྫོང་ས་མཁར་རྫོང་ལག།	07-251511/251798	07-251738	
Jomotshangkha Dungkhag	རྫོམ་ཚང་ལ་རྩུབ་ལག།	07-671104 then dial 2038		
Samdrupcholing Dungkhag	བསམ་བླག་ཚོས་སྤོང་རྒྱལ་ལག།	07-243012		
Main Border Gate Office	ས་མཚམས་འཛུལ་སྐྱེའི་ཡིག་ཚང་།	07-251777		
Pinchina Check Post Office	ཕིན་ཅི་ན་ཞིབ་དཔྱད་སྟོན་པ་ཡིག་ཚང་།	07-251083		
Sarpang	གསར་སྤང་ཡིག་ཚང་།	06-365267	06-365467	
Quarantine Station Gelephu	དཀོ་ལེགས་ཕུག་ནད་བརྟག་ལྷུང་བཞག་ཡིག་ཚང་།	06-251477	06-251819	
Gelephu Town Permit Office	དཀོ་ལེགས་ཕུག་རྫོམ་གྱི་རྫོག་ཐམ་ཡིག་ཚང་།	06-252060		
Thimphu	ཐིམ་ཕུག་རྫོང་ལག།	02-334147/334148	02-335087 02-328353	
Post Office	ཐིམ་ཕུག་འབྲུག་འགྲེལ་ཡིག་ཚང་།	02-337485 (Telefax)		
Tsirang	ཕྱི་རང་རྫོང་ལག།	06-471281	06-471274	
Trashigang	བཀྲ་ཤིས་རྫོང་རྫོང་ལག།	04-521246	04-521398	

Department/Office	མི་ངོམ་/ཡིག་ཚང་།	བརྒྱན་འབྲིན། PABX/Telephone	ཕར་འབྲིན། Fax No.	ཡོང་སའ་འབྲེལ་ འཆར་རྒྱ། Website
Trashiyangtse	བཀྲ་ཤིས་གཡང་ཅེ་རྫོང་ལག་།	04-781183	04-781191	
Trongsa	གྲོང་གསར་རྫོང་ལག་།	03-521365	03-521369	
Wangdue	དབང་འབྲུག་པོ་བླང་རྫོང་ལག་།	02-481454	02-481465	
Zhemgang	གཞལ་སྐང་རྫོང་ལག་།	03-741311	03-741344	
Panbang Dungkhag	ཕུན་སྐང་རྫུང་ལག་།	03-794040 (Telefax)		
<b>ལྗང་ཡོངས་སྤྱི་ལུན་རིགས་སྣ་ལྟེ་བ། National Biodiversity Centre (NBC), Serbithang</b>				
General Office	སྤྱི་རབ་ཉར་ཡིག་ཚང་།	02-351218/351417/ 350268	02-351219	www.nbc.gov.bt/ www.biodiversity.bt
Program Director	ལས་རིམ་མདོ་ཚེན།	02-351416		
Botanical Garden, Serbithang	ཕྱི་ཤིང་ལྷུང་རྩལ་སྤྱི་རྒྱུ་ཚོལ་།	02-351278		
<b>གྲོང་གསེབ་བོད་འཕེལ་སྤྱོད་རྒྱུ་རྒྱུ་བ། གཞལ་སྐང་། Rural Development Training Centre (RDTC), Zhemgang</b>				
General Office	སྤྱི་རབ་ཉར་ཡིག་ཚང་།	03-741350		
Director	མདོ་ཚེན།	03-741348	03-741351	
<b>ལས་འགུལ་དང་ལ་བྱུང་གཞན། Project and other contacts</b>				
<b>Commercial Agriculture &amp; Resilient Livelihoods Enhancement Programme (CARLEP), Wengkar, Mongar</b>				
Program Director	ལས་རིམ་མདོ་ཚེན།	04-641236/641650	04-641237	www.carlep.gov.bt
Sr. Finance Officer	དངུལ་རྒྱུས་འགོ་དཔོན་གོང་མ།	02-333787		
<b>འབྲུག་བཟའ་སྦྱོར་ལས་འཛིན། Food Corporation of Bhutan Ltd (FCBL)</b>				
Phuentsholing	General Office	05-52505/252104/ 252466		www.fcbl.bt
	Chief Executive Officer	05-2553824	05-252289	
	PA to CEO	05-252241		
Thimphu	Regional Manager	02-322877	02-323957	
Gelephu	Regional Manager	06-251048	06-251093	
Samdrup Jongkhar	Regional Manager	07-251073	07-251123	
<b>སོ་རྩམ་འཕུལ་ཆས་ལས་འཛིན་ཚོད། Farm Machinery Corporation Limited (FMCL)</b>				
Paro	General Office	08-272125/917		www.fmcl.bt

Department/Office	མི་རིམ་/ཡིག་ཚང་།	བརྒྱུན་འབྲིན། PABX/Telephone	ཕར་འབྲིན། Fax No.	ཡོང་སའ་འབྲེལ་ འཆར་རྒྱ། Website
<b>འབྲུག་སློབ་ཕྱིར་ལས་འཛིན་ཚོང་། Green Bhutan Corporation Limited (GCBL)</b>				
Thimphu	General Office	02-350643		www.gcbl.bt
<b>འབྲུག་སློན་ཚོར་གོང་འཕེལ་ལས་འཛིན་ཚོང་། Bhutan Livestock Development Corporation Limited (BLDCL)</b>				
Thimphu	General Office	02-365520		
<b>འབྲུག་སོ་ནམ་སོན་སྐྱེད་བཅོ་བླ་ཚོང་འཛིན་ཚོང་། Bhutan Agro Industries Limited (BAIL)</b>				
General Office	ལྷིང་བཏང་ཡིག་ཚང་།	02-351078/351268		www.btnagro.bt
Managing Director	འཛིན་སྐྱོར་པོ་ཚེ་རི།	02-351069		
<b>རང་བཞིན་ཐོན་སྐྱེད་མཐོ་རིམ་སློབ་གྲྭ། ལོད་སྤྲིས་ས། དབང་འདུས། College of Natural Resources (CNR), Lobessa, Wangdue</b>				
General Office	ལྷིང་བཏང་ཡིག་ཚང་།	02-76249/376250/ 376251/376252	02-376254	www.cnr.edu.bt
<b>རྫོང་ཁག་རང་བཞིན་སྲུང་སྐྱོབ་སྐྱེད་ལྗེ་ཚོང་། Dzongkhag RNR Sectors</b>				
<b>Dzongkhag</b>	རྫོང་ཁག།	<b>Telephone No.</b>	<b>Fax No.</b>	
<b>Bumthang</b>	ལུས་ཐང་རྫོང་ཁག།			
Dzongkhag Agriculture Officer (DAO)	རྫོང་ཁག་སོ་ནམ་འགོ་དཔོན།	03-631223	03-631330	
Dzongkhag Livestock Officer (DLO)	རྫོང་ཁག་སློན་ཚོར་འགོ་དཔོན།	03-631200	03-631616	
<b>Chukha</b>	ཚུལ་རྫོང་ཁག།			
Dzongkhag Agriculture Officer	རྫོང་ཁག་སོ་ནམ་འགོ་དཔོན།	08-478808 08	08-478807	
Dzongkhag Livestock Officer	རྫོང་ཁག་སློན་ཚོར་འགོ་དཔོན།	08-478807	08-478807	
<b>Dagana</b>	དར་དཀར་རྫོང་ཁག།			
Dzongkhag Agriculture Officer	རྫོང་ཁག་སོ་ནམ་འགོ་དཔོན།	06-481117	06-481288	
Dzongkhag Livestock Officer	རྫོང་ཁག་སློན་ཚོར་འགོ་དཔོན།	06-481207	06-481115	
<b>Gasa</b>	སག་རས།			
Dzongkhag Agriculture Officer	རྫོང་ཁག་སོ་ནམ་འགོ་དཔོན།	16288181	02-688102	
Dzongkhag Livestock Officer	རྫོང་ཁག་སློན་ཚོར་འགོ་དཔོན།	16288181	02-688102	
<b>Haa</b>	ཧྲ།			
Dzongkhag Agriculture Officer	རྫོང་ཁག་སོ་ནམ་འགོ་དཔོན།	08-375243	08-375424	

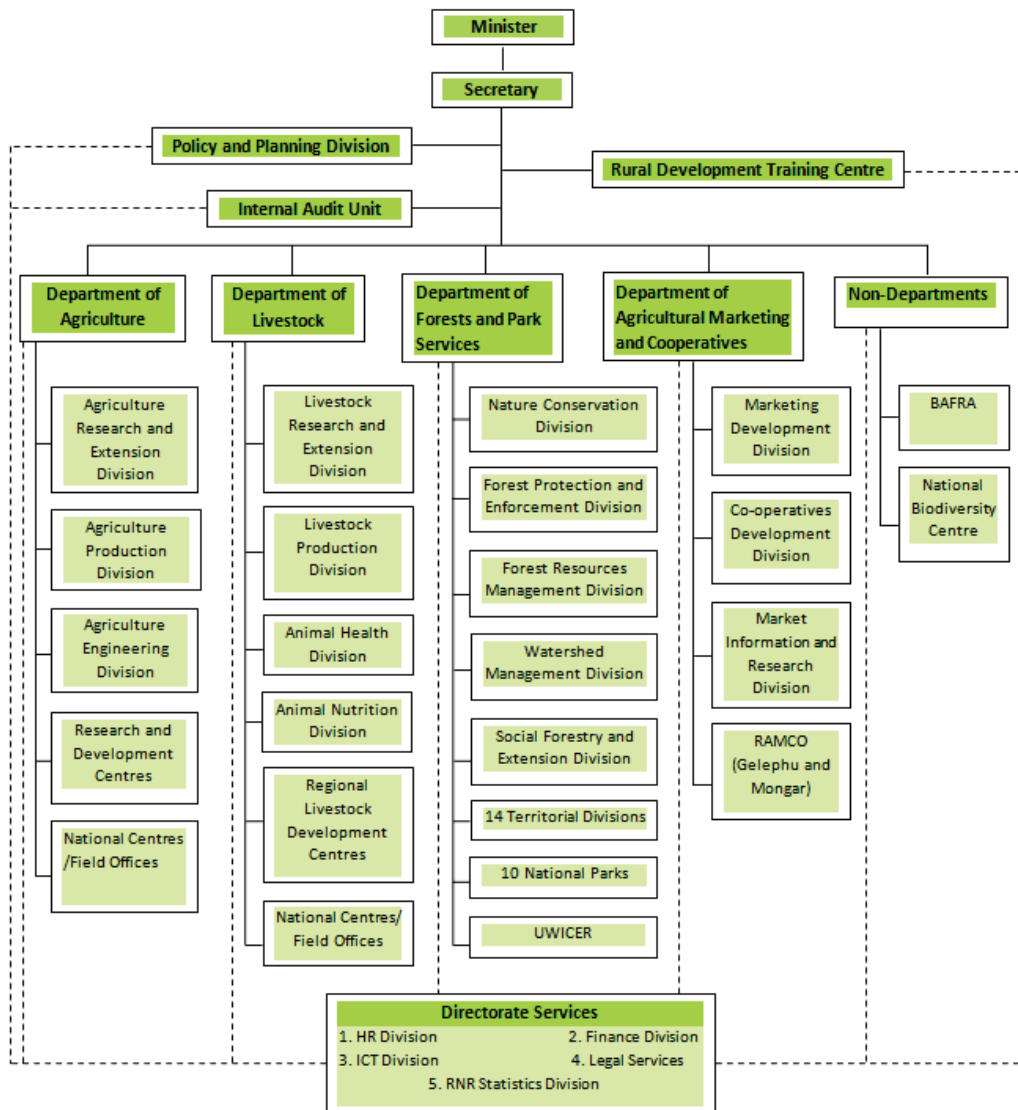


Department/Office	མི་ངོམ་/ཡིག་ཚང་།	བརྒྱ་དེབ་ཐུགས་ PABX/Telephone	ཕར་འབྲིན། Fax No.	ཡིང་མ་འབྲེལ་ འཆར་སྒོ། Website
Dzongkhag Livestock Officer	རྫོང་ལག་སློབ་ཞུ་འགོ་དཔོན།	08-375353	08-375329	
<b>Lhuentse</b>	ལྷུན་ཅི།			
Dzongkhag Agriculture Officer	རྫོང་ལག་སོ་རྣམ་འགོ་དཔོན།	04-545127	04-545127	
Dzongkhag Livestock Officer	རྫོང་ལག་སློབ་ཞུ་འགོ་དཔོན།	04-545104	04-545105	
<b>Mongar</b>	མོང་སྐར།			
Dzongkhag Agriculture Officer	རྫོང་ལག་སོ་རྣམ་འགོ་དཔོན།	04-641181	04-641181	
Dzongkhag Livestock Officer	རྫོང་ལག་སློབ་ཞུ་འགོ་དཔོན།	04-641173	04-641134	
<b>Paro</b>	ཕུ་ལོ།			
Dzongkhag Agriculture Officer	རྫོང་ལག་སོ་རྣམ་འགོ་དཔོན།	08-271046	-	
Dzongkhag Livestock Officer	རྫོང་ལག་སློབ་ཞུ་འགོ་དཔོན།	08-271242	08-272950	
<b>Pemagatshel</b>	ཕུང་དགའ་ཚེལ།			
Dzongkhag Agriculture Officer	རྫོང་ལག་སོ་རྣམ་འགོ་དཔོན།	07-471137	07-471142	
Dzongkhag Livestock Officer	རྫོང་ལག་སློབ་ཞུ་འགོ་དཔོན།	07-471157	07-471142	
<b>Punakha</b>	ཕུ་ནལ།			
Dzongkhag Agriculture Officer	རྫོང་ལག་སོ་རྣམ་འགོ་དཔོན།	02-584166	02-584526	
Dzongkhag Livestock Officer	རྫོང་ལག་སློབ་ཞུ་འགོ་དཔོན།	02-584104	02-584121	
<b>Samdrup Jongkhar</b>	བསམ་བླུག་རྫོང་མ་ལར།			
Dzongkhag Agriculture Officer	རྫོང་ལག་སོ་རྣམ་འགོ་དཔོན།	07-251483	07-251483	
Dzongkhag Livestock Officer	རྫོང་ལག་སློབ་ཞུ་འགོ་དཔོན།	07-251173	07-251158	
<b>Samtse</b>	བསམ་ཅུ།			
Dzongkhag Agriculture Officer	རྫོང་ལག་སོ་རྣམ་འགོ་དཔོན།	05-365613	05-365839	
Dzongkhag Livestock Officer	རྫོང་ལག་སློབ་ཞུ་འགོ་དཔོན།	05-365252	05-365537	
<b>Sarpang</b>	གསར་ལྗང།			
Dzongkhag Agriculture Officer	རྫོང་ལག་སོ་རྣམ་འགོ་དཔོན།	06-365454	06-365179	
Dzongkhag Livestock Officer	རྫོང་ལག་སློབ་ཞུ་འགོ་དཔོན།	06-365174	06-365145	
<b>Thimphu</b>	ཐིམ་ཕུག།			
Dzongkhag Agriculture Officer	རྫོང་ལག་སོ་རྣམ་འགོ་དཔོན།	02-324205	02-334975	
Dzongkhag Livestock Officer	རྫོང་ལག་སློབ་ཞུ་འགོ་དཔོན།	02-325099	02-321219	

<b>Trashigang</b>		བྲག་ཤིས་སྐྱང།	
Dzongkhag Agriculture Officer	རྫོང་ཁག་སོ་རྣམས་འགོ་དཔོན།	04-521296	04-521252
Dzongkhag Livestock Officer	རྫོང་ཁག་སློ་རྩིང་འགོ་དཔོན།	04-521602	04-521167
<b>Trashiyangtse</b>		བྲག་ཤིས་གཡང་མེ།	
Dzongkhag Agriculture Officer	རྫོང་ཁག་སོ་རྣམས་འགོ་དཔོན།	04-781104	04-781104
Dzongkhag Livestock Officer	རྫོང་ཁག་སློ་རྩིང་འགོ་དཔོན།	04-781111	04-781135
<b>Trongsa</b>		ཀྲོང་གསལ།	
Dzongkhag Agriculture Officer	རྫོང་ཁག་སོ་རྣམས་འགོ་དཔོན།	03-521164	03-521159
Dzongkhag Livestock Officer	རྫོང་ཁག་སློ་རྩིང་འགོ་དཔོན།	03-521145	03-521231
<b>Tsirang</b>		ཕྱི་རང།	
Dzongkhag Agriculture Officer	རྫོང་ཁག་སོ་རྣམས་འགོ་དཔོན།	06-471156	06-471156
Dzongkhag Livestock Officer	རྫོང་ཁག་སློ་རྩིང་འགོ་དཔོན།	06-471131	06-471397
<b>Wangdue</b>		དབང་འབྲུག།	
Dzongkhag Agriculture Officer	རྫོང་ཁག་སོ་རྣམས་འགོ་དཔོན།	02-481502	02-481409
Dzongkhag Livestock Officer	རྫོང་ཁག་སློ་རྩིང་འགོ་དཔོན།	02-481675	02-481380
<b>Zhemgang</b>		གཞལ་སྐྱང།	
Dzongkhag Agriculture Officer	རྫོང་ཁག་སོ་རྣམས་འགོ་དཔོན།	03-741143	03-741124
Dzongkhag Livestock Officer	རྫོང་ཁག་སློ་རྩིང་འགོ་དཔོན།	03-741170	03-741170

# Organogram

## Ministry of Agriculture and Forests



----- Administrative Support for HR, Financial, ICTD and Legal Services

Date:.....



A series of horizontal dotted lines for writing, spanning the width of the page.



Date:.....

A series of horizontal dotted lines for writing, spanning the width of the page.

Date:.....



A series of horizontal dotted lines for writing, spanning the width of the page.



Date:.....

A series of horizontal dotted lines for writing, spanning the width of the page.

Date:.....



A series of horizontal dotted lines for writing, spanning the width of the page.





Date:.....



A series of horizontal dotted lines for writing, spanning the width of the page.



Date:.....

A series of horizontal dotted lines for writing, spanning the width of the page.

Date:.....



A series of horizontal dotted lines for writing, spanning the width of the page.



Date:.....

A series of horizontal dotted lines for writing.

Date:.....



A series of horizontal dotted lines for writing, spanning the width of the page.



Date:.....

A series of horizontal dotted lines for writing, spanning the width of the page.

Date:.....



A series of horizontal dotted lines for writing, spanning the width of the page.





Date:.....

A series of horizontal dotted lines for writing, spanning the width of the page.

Date:.....



A series of horizontal dotted lines spanning the width of the page, providing a template for writing or drawing.



Date:.....

A series of horizontal dotted lines for writing, spanning the width of the page.

Date:.....



A series of horizontal dotted lines for writing, spanning the width of the page.



Date:.....

A series of horizontal dotted lines for writing, spanning the width of the page.

Date:.....



A series of horizontal dotted lines for writing, spanning the width of the page.



Date:.....

A series of horizontal dotted lines for writing, spanning the width of the page.

Date:.....



A series of horizontal dotted lines for writing, spanning the width of the page.





Date:.....

A series of horizontal dotted lines for writing, spanning the width of the page.

Date:.....



A series of horizontal dotted lines for writing, spanning the width of the page.



Date:.....

A series of horizontal dotted lines for writing, spanning the width of the page.

Date:.....



A series of horizontal dotted lines for writing, spanning the width of the page.



Date:.....

A series of horizontal dotted lines for writing, spanning the width of the page.

Date:.....



A series of horizontal dotted lines for writing, spanning the width of the page.



Date:.....



A series of horizontal dotted lines for writing, spanning the width of the page.





Date:.....

A series of horizontal dotted lines for writing, spanning the width of the page.

Date:.....



A series of horizontal dotted lines for writing, spanning the width of the page.



Date:.....

A series of 22 horizontal dotted lines for writing, spanning the width of the page.

Date:.....



A series of horizontal dotted lines for writing, spanning the width of the page.



Date:.....

A series of horizontal dotted lines for writing.

Date:.....



A series of horizontal dotted lines for writing, spanning the width of the page.



Date:.....

A series of horizontal dotted lines providing a writing area.

Date:.....



A series of horizontal dotted lines for writing, spanning the width of the page.





Date:.....



A series of horizontal dotted lines for writing, spanning the width of the page.



Date:.....



A series of horizontal dotted lines for writing, spanning the width of the page.



Date:.....

A series of horizontal dotted lines for writing, spanning the width of the page.



Date:.....



A series of horizontal dotted lines for writing, spanning the width of the page.



Date:.....

A series of horizontal dotted lines for writing.

Date:.....



A series of horizontal dotted lines for writing, spanning the width of the page.





Date:.....

A series of horizontal dotted lines for writing, spanning the width of the page. A solid horizontal line is present at the very bottom of the page.

Date:.....



A series of horizontal dotted lines for writing, spanning the width of the page.



Date:.....

Lined writing area consisting of 20 horizontal rows, each starting with a dotted line.

Date:.....



A series of horizontal dotted lines for writing, spanning the width of the page.



Date:.....

A series of horizontal dotted lines for writing, spanning the width of the page.

Date:.....



A series of horizontal dotted lines for writing, spanning the width of the page.



Date:.....

A series of horizontal dotted lines for writing, spanning the width of the page.

Date:.....



A series of horizontal dotted lines for writing.





Date:.....



A series of horizontal dotted lines for writing, spanning the width of the page.



Date:.....

A series of horizontal dotted lines for writing, spanning the width of the page.

Date:.....



A series of horizontal dotted lines for writing, spanning the width of the page.







Date:.....

A series of horizontal dotted lines for writing, spanning the width of the page.

Date:.....



A series of horizontal dotted lines for writing, spanning the width of the page.





Date:.....

A series of horizontal dotted lines for writing, spanning the width of the page.



Date:.....



A series of horizontal dotted lines for writing, spanning the width of the page.



Date:.....

A series of horizontal dotted lines for writing, spanning the width of the page.

Date:.....



A series of horizontal dotted lines for writing, spanning the width of the page.



Date:.....

A series of horizontal dotted lines for writing, spanning the width of the page.



Date:.....



A series of horizontal dotted lines for writing, spanning the width of the page.



Date:.....

A series of horizontal dotted lines for writing, spanning the width of the page.

Date:.....



A series of horizontal dotted lines for writing, spanning the width of the page.





Date:.....



A series of horizontal dotted lines for writing, spanning the width of the page.



Date:.....

A series of horizontal dotted lines for writing, spanning the width of the page.

Date:.....



A series of horizontal dotted lines for writing, spanning the width of the page.



Date:.....

A series of horizontal dotted lines for writing, spanning the width of the page.

Date:.....



A series of horizontal dotted lines for writing, spanning the width of the page.



Date:.....

A series of horizontal dotted lines for writing, spanning the width of the page.

Date:.....



A series of horizontal dotted lines for writing, spanning the width of the page.





Date:.....

A series of horizontal dotted lines for writing, spanning the width of the page.

Date:.....



A series of horizontal dotted lines for writing, spanning the width of the page.



Date:.....

A series of horizontal dotted lines for writing, spanning the width of the page.

Date:.....



A series of horizontal dotted lines for writing, spanning the width of the page.



Date:.....

A series of horizontal dotted lines for writing, spanning the width of the page.

Date:.....



A series of horizontal dotted lines for writing, spanning the width of the page.



Date:.....

A series of horizontal dotted lines for writing, spanning the width of the page.

Date:.....



A series of horizontal dotted lines for writing, spanning the width of the page.





Date:.....



Lined writing area with horizontal dotted lines.



Date:.....

A series of 25 horizontal dotted lines for writing.

Date:.....



A series of horizontal dotted lines for writing, spanning the width of the page.



Date:.....

A series of 25 horizontal dotted lines spanning the width of the page, intended for writing.

Date:.....



A series of horizontal dotted lines providing a template for handwriting practice, spanning the width of the page.



Date:.....

A series of horizontal dotted lines for writing, spanning the width of the page.

Date:.....



A series of horizontal dotted lines for writing, spanning the width of the page.





Date:.....

A series of horizontal dotted lines for writing, spanning the width of the page.

Date:.....



A series of horizontal dotted lines for writing, spanning the width of the page.



A series of horizontal dotted lines for writing, spanning the width of the page.

Date:.....



A series of horizontal dotted lines for writing, spanning the width of the page.



Date:.....



A series of horizontal dotted lines for writing, spanning the width of the page.



Date:.....

A series of horizontal dotted lines for writing, spanning the width of the page.

Date:.....



A large section of the page containing multiple sets of horizontal dotted lines, intended for writing or taking notes.





Date:.....

A series of horizontal dotted lines for writing, spanning the width of the page.

Date:.....



A series of horizontal dotted lines for writing, spanning the width of the page.



Date:.....



A series of horizontal dotted lines for writing, spanning the width of the page.



Date:.....

A series of horizontal dotted lines for writing, spanning the width of the page.

Date:.....



A series of horizontal dotted lines for writing, spanning the width of the page.



Date:.....

A series of horizontal dotted lines for writing, spanning most of the page width.



Date:.....



A series of horizontal dotted lines for writing, spanning the width of the page.





Date:.....

A series of horizontal dotted lines spanning the width of the page, providing a guide for handwriting practice. The lines are evenly spaced and extend across the entire width of the page.

Date:.....



A series of horizontal dotted lines for writing, spanning the width of the page.



A series of 20 horizontal dotted lines providing a template for handwriting practice.

Date:.....



A series of horizontal dotted lines for writing, spanning the width of the page.



Date:.....

A series of horizontal dotted lines spaced evenly down the page, intended for writing.

Date:.....



A series of horizontal dotted lines for writing, spanning the width of the page.



Date:.....

A series of horizontal dotted lines for writing, spanning the width of the page.

Date:.....



A series of horizontal dotted lines for writing, spanning the width of the page.





Date:.....



A series of horizontal dotted lines spanning the width of the page, providing a guide for handwriting practice.



Date:.....

Lined writing area with horizontal dotted lines.

Date:.....



A series of horizontal dotted lines for writing, spanning the width of the page.



Date:.....

A series of horizontal dotted lines for writing, spanning the width of the page.

Date:.....



A series of horizontal dotted lines for writing, spanning the width of the page.



Date:.....

A series of horizontal dotted lines for writing, spanning the width of the page.

Date:.....



A series of horizontal dotted lines for writing, spanning the width of the page.





Date:.....

A series of horizontal dotted lines for writing, spanning the width of the page.



Date:.....



A series of horizontal dotted lines for writing, spanning the width of the page.



Date:.....

A series of horizontal dotted lines for writing, spanning the width of the page.

Date:.....



A series of horizontal dotted lines for writing, spanning the width of the page.



Date:.....

A series of horizontal dotted lines for writing, spanning the width of the page.

Date:.....



A series of horizontal dotted lines for writing, spanning the width of the page.



Date:.....

A series of horizontal dotted lines for writing, spanning the width of the page.

Date:.....



A series of horizontal dotted lines for writing, spanning the width of the page.





Date:.....

A series of horizontal dotted lines for writing, spanning the width of the page.

Date:.....



A series of horizontal dotted lines for writing, spanning the width of the page.



Date:.....

A series of horizontal dotted lines for writing, spanning the width of the page.

Date:.....



A series of horizontal dotted lines for writing, spanning the width of the page.



Date:.....

A series of horizontal dotted lines for writing, spanning the width of the page.